

## Product datasheet for **TA314658**

### UBE2D2 Rabbit Polyclonal Antibody

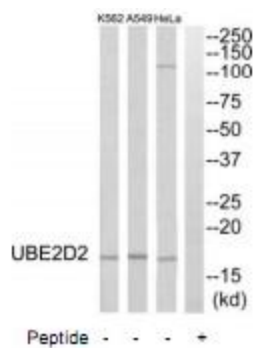
#### Product data:

|                       |  |
|-----------------------|--|
| Product Type:         | Primary Antibodies   |
| Applications:         | WB   |
| Recommended Dilution: | WB: 1:500~1:3000, ELISA: 1:40000   |
| Reactivity:           | Human, Mouse, Rat  |
| Host:                 | Rabbit   |
| Isotype:              | IgG  |
| Clonality:            | Polyclonal   |
| Immunogen:            | The antiserum was produced against synthesized peptide derived from C-terminal of human UBE2D2.                                      |
| Formulation:          | Phosphate buffered saline (without Mg <sup>2+</sup> and Ca <sup>2+</sup> ), pH 7.4, 150mM NaCl, 0.02% sodium azide and 50% glycerol. |
| Concentration:        | lot specific   |
| Purification:         | The antibody was affinity-purified from rabbit antiserum by affinity-chromatography using epitope-specific immunogen.                |
| Conjugation:          | Unconjugated   |
| Storage:              | Store at -20°C as received.  |
| Stability:            | Stable for 12 months from date of receipt.   |
| Gene Name:            | ubiquitin conjugating enzyme E2 D2   |
| Database Link:        | <a href="#">NP_003330</a><br><a href="#">Entrez Gene 641452 Rat</a> <a href="#">Entrez Gene 7322 Human</a><br><a href="#">P62837</a> |
| Synonyms:             | 5; E2(17)KB2; PUBC1; UBC4; UBCH4; UBCH5B   |
| Note:                 | UBE2D2 antibody detects endogenous levels of total UBE2D2 protein.   |
| Protein Pathways:     | Ubiquitin mediated proteolysis   |



[View online »](#)

## Product images:



Western blot analysis of extracts from HeLa cells, A549 cells and K562 cells, using UBE2D2 antibody. The lane on the right is treated with the synthesized peptide.