

Product datasheet for **TA314655**

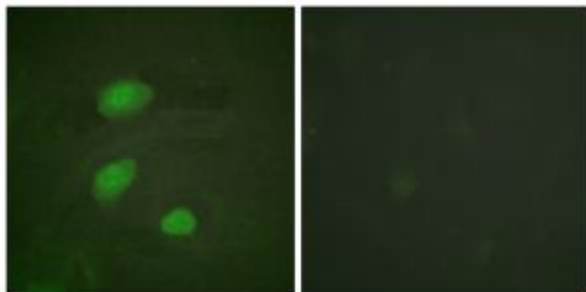
HIRA Rabbit Polyclonal Antibody

Product data:

Product Type:	Primary Antibodies
Applications:	IF
Recommended Dilution:	IF: 1:100~1:500, ELISA: 1:1000
Reactivity:	Human, Mouse
Modifications:	Phospho-specific
Host:	Rabbit
Isotype:	IgG
Clonality:	Polyclonal
Immunogen:	The antiserum was produced against synthesized phosphopeptide derived from human HIRA around the phosphorylation site of threonine 555 (L-T-T P-P-S).
Formulation:	Phosphate buffered saline (without Mg ²⁺ and Ca ²⁺), pH 7.4, 150mM NaCl, 0.02% sodium azide and 50% glycerol.
Concentration:	lot specific
Purification:	The antibody was affinity-purified from rabbit antiserum by affinity-chromatography using epitope-specific immunogen.
Conjugation:	Unconjugated
Storage:	Store at -20°C as received.
Stability:	Stable for 12 months from date of receipt.
Gene Name:	histone cell cycle regulator
Database Link:	NP_003316 Entrez Gene 15260 Mouse Entrez Gene 7290 Human P54198
Synonyms:	DGCR1; TUP1; TUPLE1
Note:	HIRA (Phospho-Thr555) antibody detects endogenous levels of HIRA only when phosphorylated at threonine 555.
Protein Families:	Transcription Factors



[View online »](#)

Product images:

Immunofluorescence analysis of HeLa cells, using HIRA (Phospho-Thr555) antibody. The picture on the right is treated with the synthesized peptide.