

## Product datasheet for **TA314651**

### Mps1 (TTK) Rabbit Polyclonal Antibody

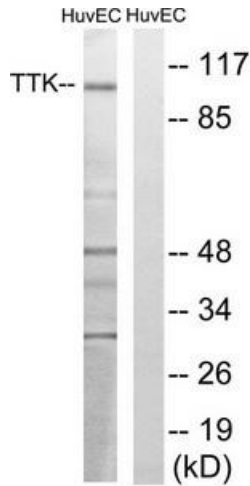
#### Product data:

Product Type:	Primary Antibodies
Applications:	IHC, WB
Recommended Dilution:	WB: 1:500~1:3000, IHC: 1:50~1:100, ELISA: 1:10000
Reactivity:	Human, Mouse
Host:	Rabbit
Isotype:	IgG
Clonality:	Polyclonal
Immunogen:	The antiserum was produced against synthesized non-phosphopeptide derived from human TTK around the phosphorylation site of threonine 676 (D-T-TP-S-V).
Formulation:	Phosphate buffered saline (without Mg <sup>2+</sup> and Ca <sup>2+</sup> ), pH 7.4, 150mM NaCl, 0.02% sodium azide and 50% glycerol.
Concentration:	lot specific
Purification:	The antibody was affinity-purified from rabbit antiserum by affinity-chromatography using epitope-specific immunogen.
Conjugation:	Unconjugated
Storage:	Store at -20°C as received.
Stability:	Stable for 12 months from date of receipt.
Gene Name:	TTK protein kinase
Database Link:	<a href="#">NP_001160163</a> <a href="#">Entrez Gene 22137 Mouse</a> <a href="#">Entrez Gene 7272 Human</a> <a href="#">P33981</a>
Synonyms:	CT96; ESK; MPH1; MPS1; MPS1L1; PYT
Note:	TTK (Ab-676) antibody detects endogenous levels of total TTK protein.
Protein Families:	Druggable Genome, Protein Kinase
Protein Pathways:	Cell cycle, Oocyte meiosis, TGF-beta signaling pathway, Ubiquitin mediated proteolysis, Wnt signaling pathway

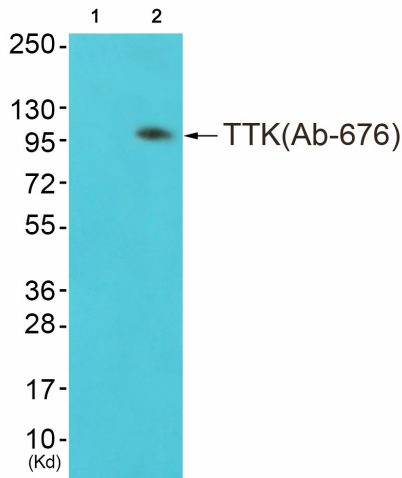


[View online »](#)

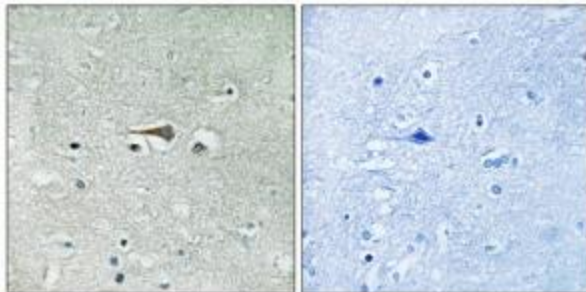
Product images:



Western blot analysis of extracts from HUVEC cells, treated with etoposide (25uM, 24hours), using TTK (Ab-676) antibody. The lane on the right is treated with the synthesized peptide.



Western blot analysis of extracts from colo cells (Lane 2), using TTK (Ab-676) Antibody. The lane on the left is treated with synthesized peptide.



Immunohistochemistry analysis of paraffin-embedded human brain tissue using TTK (Ab-676) antibody. The picture on the right is treated with the synthesized peptide.