

Product datasheet for **TA314644**

Tuberin (TSC2) Rabbit Polyclonal Antibody

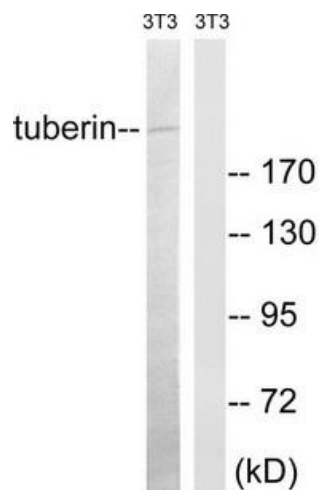
Product data:

Product Type:	Primary Antibodies
Applications:	WB
Recommended Dilution:	WB: 1:500~1:3000, ELISA: 1:20000
Reactivity:	Human, Mouse, Rat
Host:	Rabbit
Isotype:	IgG
Clonality:	Polyclonal
Immunogen:	The antiserum was produced against synthesized non-phosphopeptide derived from human Tuberin around the phosphorylation site of serine 981 (S-I-SP-V-S).
Formulation:	Phosphate buffered saline (without Mg ²⁺ and Ca ²⁺), pH 7.4, 150mM NaCl, 0.02% sodium azide and 50% glycerol.
Concentration:	lot specific
Purification:	The antibody was affinity-purified from rabbit antiserum by affinity-chromatography using epitope-specific immunogen.
Conjugation:	Unconjugated
Storage:	Store at -20°C as received.
Stability:	Stable for 12 months from date of receipt.
Gene Name:	tuberous sclerosis 2
Database Link:	NP_000539 Entrez Gene 22084 Mouse Entrez Gene 24855 Rat Entrez Gene 7249 Human P49815
Synonyms:	LAM; PPP1R160; TSC4
Note:	Tuberin (Ab-981) antibody detects endogenous levels of total Tuberin protein.
Protein Families:	Druggable Genome
Protein Pathways:	Insulin signaling pathway, mTOR signaling pathway, p53 signaling pathway



[View online »](#)

Product images:



Western blot analysis of extracts from 3T3 cells, using Tuberin (Ab-981) antibody. The lane on the right is treated with the synthesized peptide.