

Product datasheet for **TA314641**

TRH Receptor (TRHR) Rabbit Polyclonal Antibody

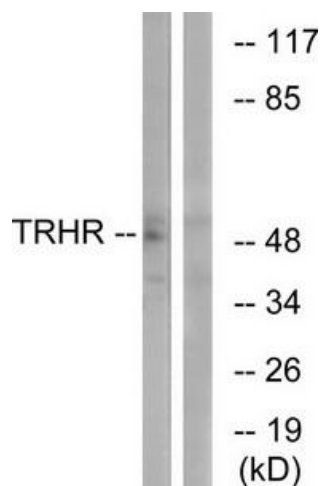
Product data:

Product Type:	Primary Antibodies
Applications:	IF, WB
Recommended Dilution:	WB: 1:500~1:3000, IF: 1:100~1:500, ELISA: 1:20000
Reactivity:	Human, Mouse, Rat
Host:	Rabbit
Isotype:	IgG
Clonality:	Polyclonal
Immunogen:	The antiserum was produced against synthesized peptide derived from internal of human TRHR.
Formulation:	Phosphate buffered saline (without Mg ²⁺ and Ca ²⁺), pH 7.4, 150mM NaCl, 0.02% sodium azide and 50% glycerol.
Concentration:	lot specific
Purification:	The antibody was affinity-purified from rabbit antiserum by affinity-chromatography using epitope-specific immunogen.
Conjugation:	Unconjugated
Storage:	Store at -20°C as received.
Stability:	Stable for 12 months from date of receipt.
Gene Name:	thyrotropin releasing hormone receptor
Database Link:	NP_003292 Entrez Gene 22045 Mouse Entrez Gene 25570 Rat Entrez Gene 7201 Human P34981
Synonyms:	TRH-R
Note:	TRHR antibody detects endogenous levels of total TRHR protein.
Protein Families:	Druggable Genome, GPCR, Transmembrane
Protein Pathways:	Calcium signaling pathway, Neuroactive ligand-receptor interaction

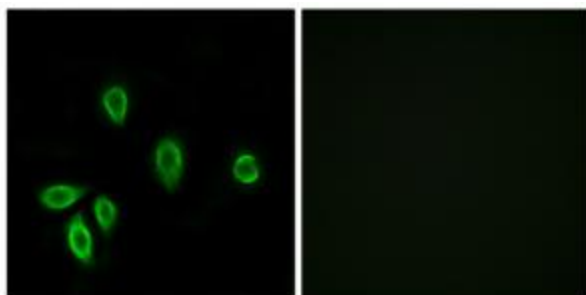


[View online »](#)

Product images:



Western blot analysis of extracts from COS-7 cells, using TRHR antibody. The lane on the right is treated with the synthesized peptide.



Immunofluorescence analysis of A549 cells, using TRHR antibody. The picture on the right is treated with the synthesized peptide.