

## Product datasheet for **TA314640**

### TCTP (TPT1) Rabbit Polyclonal Antibody

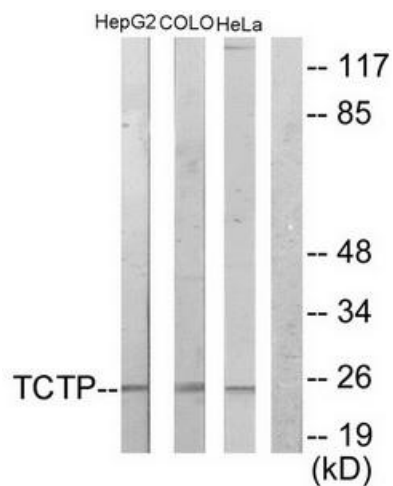
#### Product data:

Product Type:	Primary Antibodies
Applications:	IHC, WB
Recommended Dilution:	WB: 1:500~1:3000, IHC: 1:50~1:100, ELISA: 1:20000
Reactivity:	Human, Mouse, Rat
Host:	Rabbit
Isotype:	IgG
Clonality:	Polyclonal
Immunogen:	he antiserum was produced against synthesized peptide derived from internal of human TCTP.
Formulation:	Phosphate buffered saline (without Mg <sup>2+</sup> and Ca <sup>2+</sup> ), pH 7.4, 150mM NaCl, 0.02% sodium azide and 50% glycerol.
Concentration:	lot specific
Purification:	The antibody was affinity-purified from rabbit antiserum by affinity-chromatography using epitope-specific immunogen.
Conjugation:	Unconjugated
Storage:	Store at -20°C as received.
Stability:	Stable for 12 months from date of receipt.
Gene Name:	tumor protein, translationally-controlled 1
Database Link:	<a href="#">NP_003286</a> <a href="#">Entrez Gene 22070 MouseEntrez Gene 116646 RatEntrez Gene 7178 Human P13693</a>
Synonyms:	HRF; p02; p23; TCTP
Note:	TCTP antibody detects endogenous levels of total TCTP protein.

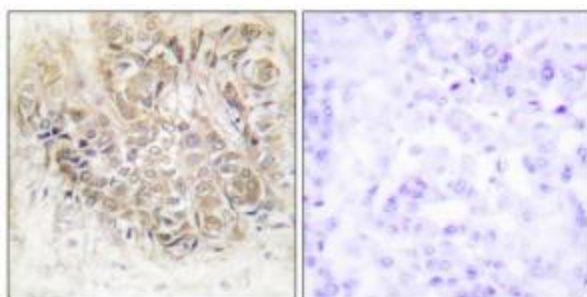


[View online »](#)

## Product images:



Western blot analysis of extracts from HepG2 cells, COLO205 cells and HeLa cells, using TCTP antibody. The lane on the right is treated with the synthesized peptide.



Immunohistochemistry analysis of paraffin-embedded human breast carcinoma tissue using TCTP antibody. The picture on the right is treated with the synthesized peptide.