

Product datasheet for **TA314637**

Topoisomerase II beta (TOP2B) Rabbit Polyclonal Antibody

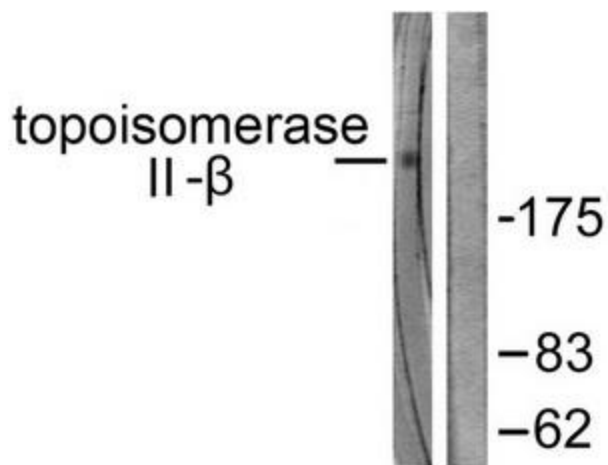
Product data:

Product Type:	Primary Antibodies
Applications:	IHC, WB
Recommended Dilution:	WB: 1:500~1:3000, IHC: 1:50~1:100, ELISA: 1:20000
Reactivity:	Human, Mouse
Host:	Rabbit
Isotype:	IgG
Clonality:	Polyclonal
Immunogen:	The antiserum was produced against synthesized peptide derived from Internal of human topoisomerase II β .
Formulation:	Phosphate buffered saline (without Mg ²⁺ and Ca ²⁺), pH 7.4, 150mM NaCl, 0.02% sodium azide and 50% glycerol.
Concentration:	lot specific
Purification:	The antibody was affinity-purified from rabbit antiserum by affinity-chromatography using epitope-specific immunogen.
Conjugation:	Unconjugated
Storage:	Store at -20°C as received.
Stability:	Stable for 12 months from date of receipt.
Gene Name:	topoisomerase (DNA) II beta
Database Link:	NP_001059 Entrez Gene 21974 Mouse Entrez Gene 7155 Human Q02880
Synonyms:	top2beta; TOP1IB
Note:	Topoisomerase II . antibody detects endogenous levels of total topoisomerase II . protein.
Protein Families:	Druggable Genome

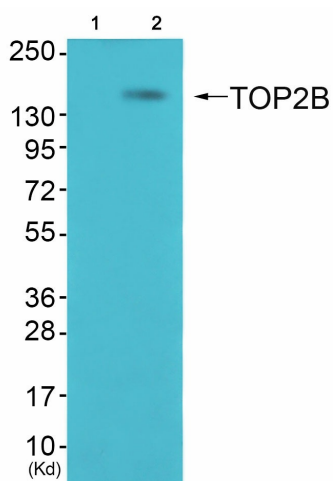


[View online »](#)

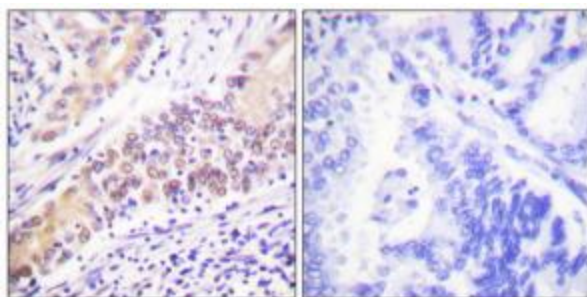
Product images:



Western blot analysis of extracts from Jurkat cells, using Topoisomerase II β antibody. The lane on the right is treated with the synthesized peptide.



Western blot analysis of extracts from K562 cells (Lane 2), using TOP2B Antibody. The lane on the left is treated with synthesized peptide.



Immunohistochemistry analysis of paraffin-embedded human lung carcinoma tissue using Topoisomerase II β antibody. The picture on the right is treated with the synthesized peptide.