

Product datasheet for **TA314631**

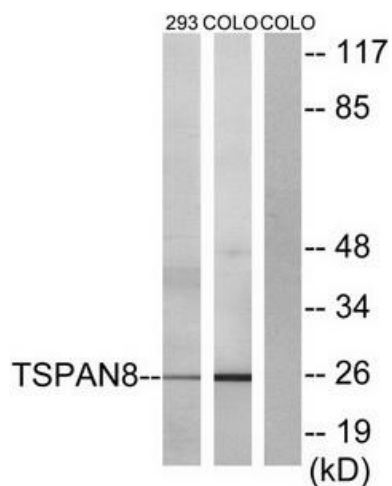
TM4SF3 (TSPAN8) Rabbit Polyclonal Antibody

Product data:

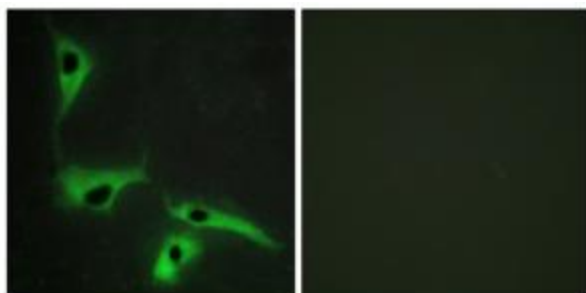
Product Type:	Primary Antibodies
Applications:	IF, WB
Recommended Dilution:	WB: 1:500~1:3000, IF: 1:100~1:500, ELISA: 1:20000
Reactivity:	Human
Host:	Rabbit
Isotype:	IgG
Clonality:	Polyclonal
Immunogen:	The antiserum was produced against synthesized peptide derived from internal of human TSPAN8.
Formulation:	Phosphate buffered saline (without Mg ²⁺ and Ca ²⁺), pH 7.4, 150mM NaCl, 0.02% sodium azide and 50% glycerol.
Concentration:	lot specific
Purification:	The antibody was affinity-purified from rabbit antiserum by affinity-chromatography using epitope-specific immunogen.
Conjugation:	Unconjugated
Storage:	Store at -20°C as received.
Stability:	Stable for 12 months from date of receipt.
Gene Name:	tetraspanin 8
Database Link:	NP_004607 Entrez Gene 7103 Human P19075
Synonyms:	CO-029; TM4SF3
Note:	TSPAN8 antibody detects endogenous levels of total TSPAN8 protein.
Protein Families:	Transmembrane



[View online »](#)

Product images:

Western blot analysis of extracts from 293 cells and COLO cells, using TSPAN8 antibody. The lane on the right is treated with the synthesized peptide.



Immunofluorescence analysis of HeLa cells, using TSPAN8 antibody. The picture on the right is treated with the synthesized peptide.