

Product datasheet for **TA314630**

TLE4 Rabbit Polyclonal Antibody

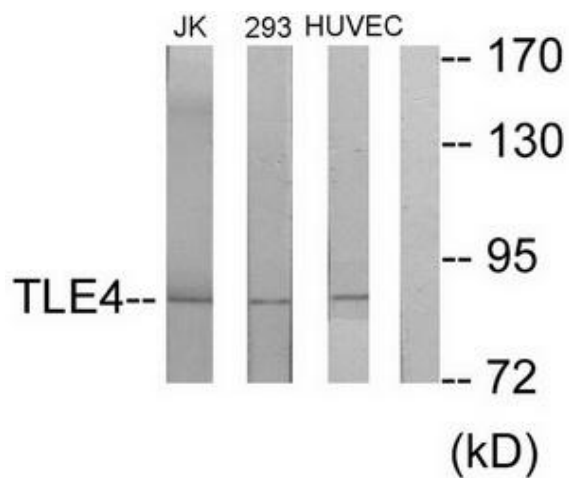
Product data:

Product Type:	Primary Antibodies
Applications:	WB
Recommended Dilution:	WB: 1:500~1:3000, ELISA: 1:20000
Reactivity:	Human, Mouse, Rat
Host:	Rabbit
Isotype:	IgG
Clonality:	Polyclonal
Immunogen:	The antiserum was produced against synthesized peptide derived from internal of human TLE4.
Formulation:	Phosphate buffered saline (without Mg ²⁺ and Ca ²⁺), pH 7.4, 150mM NaCl, 0.02% sodium azide and 50% glycerol.
Concentration:	lot specific
Purification:	The antibody was affinity-purified from rabbit antiserum by affinity-chromatography using epitope-specific immunogen.
Conjugation:	Unconjugated
Storage:	Store at -20°C as received.
Stability:	Stable for 12 months from date of receipt.
Gene Name:	transducin like enhancer of split 4
Database Link:	NP_008936 Entrez Gene 21888 Mouse Entrez Gene 25565 Rat Entrez Gene 7091 Human Q04727
Synonyms:	BCE-1; BCE1; E(spl); ESG; ESG4; Grg-4; GRG4
Note:	TLE4 antibody detects endogenous levels of total TLE4 protein.
Protein Families:	Transcription Factors



[View online »](#)

Product images:



Western blot analysis of extracts from Jurkat cells, 293 cells and HuvEc cells, using TLE4 antibody. The lane on the right is treated with the synthesized peptide.