

## Product datasheet for **TA314626**

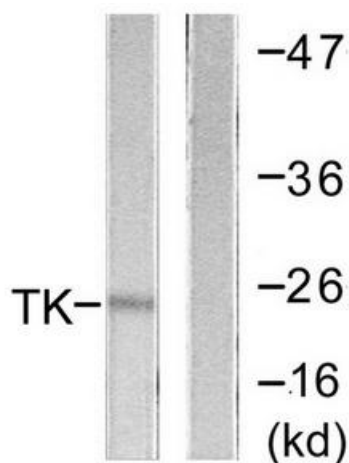
### Thymidine Kinase 1 (TK1) Rabbit Polyclonal Antibody

#### Product data:

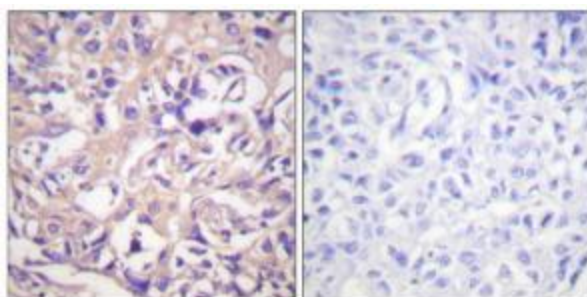
Product Type:	Primary Antibodies
Applications:	IF, IHC, WB
Recommended Dilution:	WB: 1:500~1:3000, IHC: 1:50~1:100, IF: 1:100~1:500, ELISA: 1:1000
Reactivity:	Human, Mouse
Host:	Rabbit
Isotype:	IgG
Clonality:	Polyclonal
Immunogen:	The antiserum was produced against synthesized non-phosphopeptide derived from human TK around the phosphorylation site of serine 13 (P-G-SP-P-S).
Formulation:	Phosphate buffered saline (without Mg <sup>2+</sup> and Ca <sup>2+</sup> ), pH 7.4, 150mM NaCl, 0.02% sodium azide and 50% glycerol.
Concentration:	lot specific
Purification:	The antibody was affinity-purified from rabbit antiserum by affinity-chromatography using epitope-specific immunogen.
Conjugation:	Unconjugated
Storage:	Store at -20°C as received.
Stability:	Stable for 12 months from date of receipt.
Gene Name:	thymidine kinase 1
Database Link:	<a href="#">NP_003249</a> <a href="#">Entrez Gene 21877 Mouse</a> <a href="#">Entrez Gene 7083 Human</a> <a href="#">P04183</a>
Synonyms:	TK2
Note:	TK (Ab-13) antibody detects endogenous levels of total TK protein
Protein Families:	Druggable Genome, Stem cell - Pluripotency
Protein Pathways:	Drug metabolism - other enzymes, Metabolic pathways, Pyrimidine metabolism



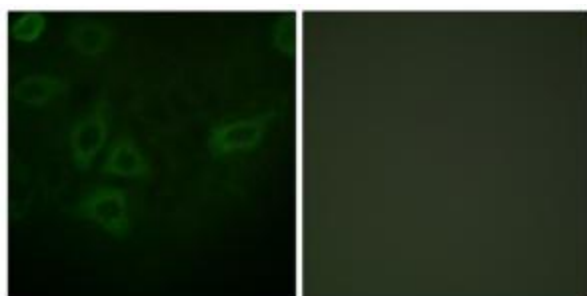
[View online »](#)

**Product images:**


Western blot analysis of extracts from COLO205 cells, using TK (Ab-13) antibody. The lane on the right is treated with the synthesized peptide.



Immunohistochemistry analysis of paraffin-embedded human breast carcinoma tissue using TK (Ab-13) antibody. The picture on the right is treated with the synthesized peptide.



Immunofluorescence analysis of HepG2 cells, using TK (Ab-13) antibody. The picture on the right is treated with the synthesized peptide.