

## Product datasheet for **TA314625**

### TIMP3 Rabbit Polyclonal Antibody

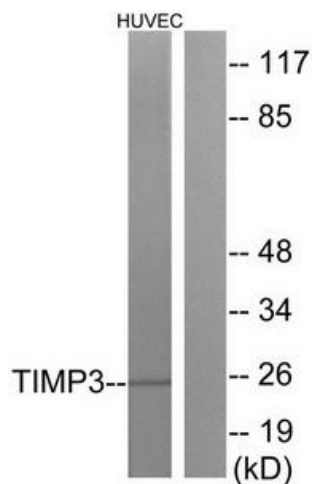
#### Product data:

Product Type:	Primary Antibodies
Applications:	WB
Recommended Dilution:	WB: 1:500~1:3000, ELISA: 1:10000
Reactivity:	Human, Mouse, Rat
Host:	Rabbit
Isotype:	IgG
Clonality:	Polyclonal
Immunogen:	The antiserum was produced against synthesized peptide derived from internal of human TIMP3.
Formulation:	Phosphate buffered saline (without Mg <sup>2+</sup> and Ca <sup>2+</sup> ), pH 7.4, 150mM NaCl, 0.02% sodium azide and 50% glycerol.
Concentration:	lot specific
Purification:	The antibody was affinity-purified from rabbit antiserum by affinity-chromatography using epitope-specific immunogen.
Conjugation:	Unconjugated
Storage:	Store at -20°C as received.
Stability:	Stable for 12 months from date of receipt.
Gene Name:	TIMP metalloproteinase inhibitor 3
Database Link:	<a href="#">NP_000353</a> <a href="#">Entrez Gene 21859 Mouse</a> <a href="#">Entrez Gene 25358 Rat</a> <a href="#">Entrez Gene 7078 Human</a> <a href="#">P35625</a>
Synonyms:	HSMRK222; K222; K222TA2; SFD
Note:	TIMP3 antibody detects endogenous levels of total TIMP3 protein.
Protein Families:	Druggable Genome, Secreted Protein



[View online »](#)

## Product images:



Western blot analysis of extracts from HUVEC cells, using TIMP3 antibody. The lane on the right is treated with the synthesized peptide.