

Product datasheet for **TA314615**

TGF alpha (TGFA) Rabbit Polyclonal Antibody

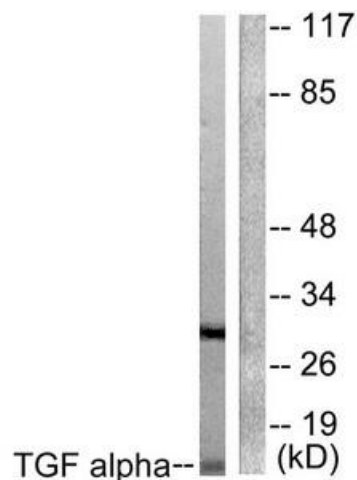
Product data:

Product Type:	Primary Antibodies
Applications:	IHC, WB
Recommended Dilution:	WB: 1:500~1:3000, IHC: 1:50~1:100, ELISA: 1:5000
Reactivity:	Human, Mouse, Rat
Host:	Rabbit
Isotype:	IgG
Clonality:	Polyclonal
Immunogen:	The antiserum was produced against synthesized peptide derived from human TGF alpha.
Formulation:	Phosphate buffered saline (without Mg ²⁺ and Ca ²⁺), pH 7.4, 150mM NaCl, 0.02% sodium azide and 50% glycerol.
Concentration:	lot specific
Purification:	The antibody was affinity-purified from rabbit antiserum by affinity-chromatography using epitope-specific immunogen.
Conjugation:	Unconjugated
Storage:	Store at -20°C as received.
Stability:	Stable for 12 months from date of receipt.
Gene Name:	transforming growth factor alpha
Database Link:	NP_001093161 Entrez Gene 21802 Mouse Entrez Gene 24827 Rat Entrez Gene 7039 Human P01135
Synonyms:	TFGA
Note:	TGF alpha antibody detects endogenous levels of total TGF alpha protein.
Protein Families:	Druggable Genome, Secreted Protein, Transmembrane
Protein Pathways:	ErbB signaling pathway, Glioma, Non-small cell lung cancer, Pancreatic cancer, Pathways in cancer, Prostate cancer, Renal cell carcinoma

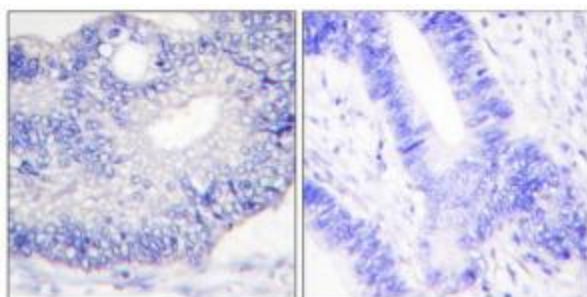


[View online »](#)

Product images:



Western blot analysis of extracts from COS7 cells, using TGF alpha antibody (#TA314615). The lane on the right is treated with the synthesized peptide.



Immunohistochemical analysis of paraffin-embedded human colon carcinoma tissue using TGF alpha antibody (#TA314615). The picture on the right is treated with the synthesized peptide.