

Product datasheet for **TA314614**

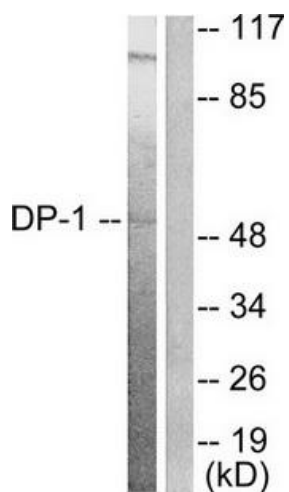
DP1 (TFDP1) Rabbit Polyclonal Antibody

Product data:

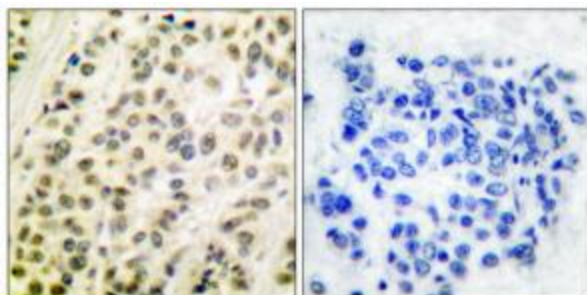
Product Type:	Primary Antibodies
Applications:	IF, IHC, WB
Recommended Dilution:	WB: 1:500~1:3000, IHC: 1:50~1:100, IF: 1:100~1:500, ELISA: 1:5000
Reactivity:	Human
Host:	Rabbit
Isotype:	IgG
Clonality:	Polyclonal
Immunogen:	The antiserum was produced against synthesized peptide derived from human DP-1.
Formulation:	Phosphate buffered saline (without Mg ²⁺ and Ca ²⁺), pH 7.4, 150mM NaCl, 0.02% sodium azide and 50% glycerol.
Concentration:	lot specific
Purification:	The antibody was affinity-purified from rabbit antiserum by affinity-chromatography using epitope-specific immunogen.
Conjugation:	Unconjugated
Storage:	Store at -20°C as received.
Stability:	Stable for 12 months from date of receipt.
Gene Name:	transcription factor Dp-1
Database Link:	NP_009042 Entrez Gene 7027 Human Q14186
Synonyms:	DILC; Dp-1; DP1; DRTF1
Note:	DP-1 antibody detects endogenous levels of total DP-1 protein.
Protein Families:	Druggable Genome, Transcription Factors
Protein Pathways:	Cell cycle, TGF-beta signaling pathway



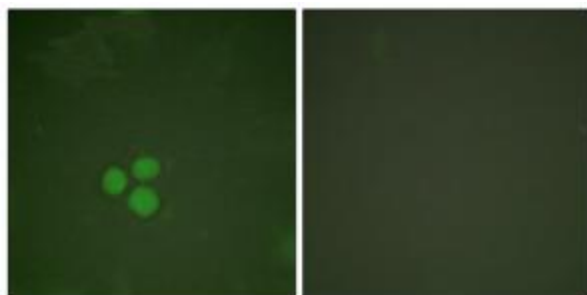
[View online »](#)

Product images:

Western blot analysis of extracts from HeLa cells, using DP-1 antibody. The lane on the right is treated with the synthesized peptide.



Immunohistochemical analysis of paraffin-embedded human breast carcinoma tissue using DP-1 antibody. The picture on the right is treated with the synthesized peptide.



Immunofluorescence analysis of HeLa cells, treated with Forskolin (40nM, 30mins), using DP-1 antibody. The picture on the right is treated with the synthesized peptide.