

Product datasheet for **TA314612**

AP2 gamma (TFAP2C) Rabbit Polyclonal Antibody

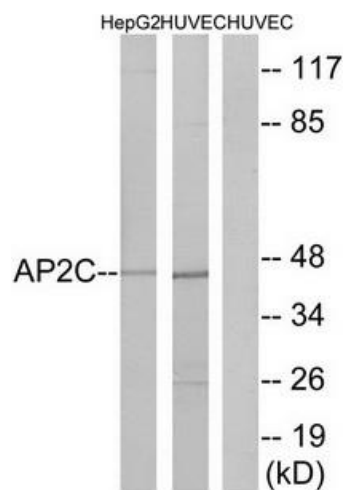
Product data:

Product Type:	Primary Antibodies
Applications:	WB
Recommended Dilution:	WB: 1:500~1:3000, ELISA: 1:40000
Reactivity:	Human, Mouse, Rat
Host:	Rabbit
Isotype:	IgG
Clonality:	Polyclonal
Immunogen:	The antiserum was produced against synthesized peptide derived from internal of human AP2C.
Formulation:	Phosphate buffered saline (without Mg ²⁺ and Ca ²⁺), pH 7.4, 150mM NaCl, 0.02% sodium azide and 50% glycerol.
Concentration:	lot specific
Purification:	The antibody was affinity-purified from rabbit antiserum by affinity-chromatography using epitope-specific immunogen.
Conjugation:	Unconjugated
Storage:	Store at -20°C as received.
Stability:	Stable for 12 months from date of receipt.
Gene Name:	transcription factor AP-2 gamma
Database Link:	NP_003213 Entrez Gene 21420 Mouse Entrez Gene 362280 Rat Entrez Gene 7022 Human Q92754
Synonyms:	AP2-GAMMA; ERF1; hAP-2g; TFAP2G
Note:	AP2C antibody detects endogenous levels of total AP2C protein.
Protein Families:	Druggable Genome, Transcription Factors



[View online »](#)

Product images:



Western blot analysis of extracts from HepG2 cells and HUVEC cells, using AP2C antibody. The lane on the right is treated with the synthesized peptide.