

Product datasheet for **TA314609**

TEF Rabbit Polyclonal Antibody

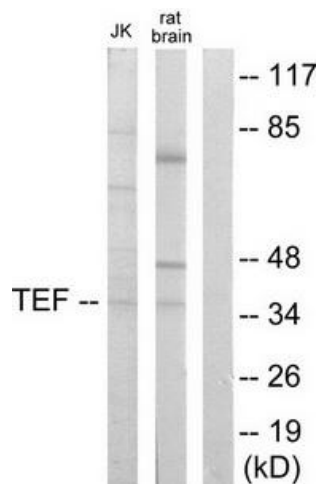
Product data:

Product Type:	Primary Antibodies
Applications:	WB
Recommended Dilution:	WB: 1:500~1:3000, ELISA: 1:5000
Reactivity:	Human, Mouse, Rat
Host:	Rabbit
Isotype:	IgG
Clonality:	Polyclonal
Immunogen:	The antiserum was produced against synthesized peptide derived from internal of human TEF.
Formulation:	Phosphate buffered saline (without Mg ²⁺ and Ca ²⁺), pH 7.4, 150mM NaCl, 0.02% sodium azide and 50% glycerol.
Concentration:	lot specific
Purification:	The antibody was affinity-purified from rabbit antiserum by affinity-chromatography using epitope-specific immunogen.
Conjugation:	Unconjugated
Storage:	Store at -20°C as received.
Stability:	Stable for 12 months from date of receipt.
Gene Name:	TEF, PAR bZIP transcription factor
Database Link:	NP_001138870 Entrez Gene 21685 Mouse Entrez Gene 29362 Rat Entrez Gene 7008 Human Q10587
Synonyms:	KIAA1655
Note:	TEF antibody detects endogenous levels of total TEF protein.
Protein Families:	Transcription Factors

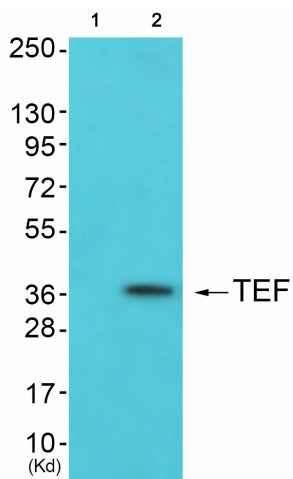


[View online »](#)

Product images:



Western blot analysis of extracts from Jurkat cells and mouse brain cells, using TEF antibody. The lane on the right is treated with the synthesized peptide.



Western blot analysis of extracts from 293 cells (Lane 2), using TEF Antibody. The lane on the left is treated with synthesized peptide.