

Product datasheet for **TA314608**

TEAD3 Rabbit Polyclonal Antibody

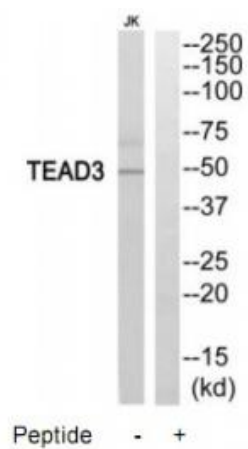
Product data:

Product Type:	Primary Antibodies
Applications:	WB
Recommended Dilution:	WB: 1:500~1:3000, ELISA: 1:10000
Reactivity:	Human, Mouse
Host:	Rabbit
Isotype:	IgG
Clonality:	Polyclonal
Immunogen:	The antiserum was produced against synthesized peptide derived from internal of human TEAD3.
Formulation:	Phosphate buffered saline (without Mg ²⁺ and Ca ²⁺), pH 7.4, 150mM NaCl, 0.02% sodium azide and 50% glycerol.
Concentration:	lot specific
Purification:	The antibody was affinity-purified from rabbit antiserum by affinity-chromatography using epitope-specific immunogen.
Conjugation:	Unconjugated
Storage:	Store at -20°C as received.
Stability:	Stable for 12 months from date of receipt.
Gene Name:	TEA domain transcription factor 3
Database Link:	NP_003205 Entrez Gene 21678 Mouse Entrez Gene 7005 Human Q99594
Synonyms:	DTEF-1; ETEF-1; TEAD-3; TEAD5; TEF-5; TEF5
Note:	TEAD3 antibody detects endogenous levels of total TEAD3 protein.
Protein Families:	Transcription Factors



[View online »](#)

Product images:



Western blot analysis of extracts from Jurkat cells, using TEAD3 antibody. The lane on the right is treated with the synthesized peptide.