

Product datasheet for **TA314607**

TEF1 (TEAD1) Rabbit Polyclonal Antibody

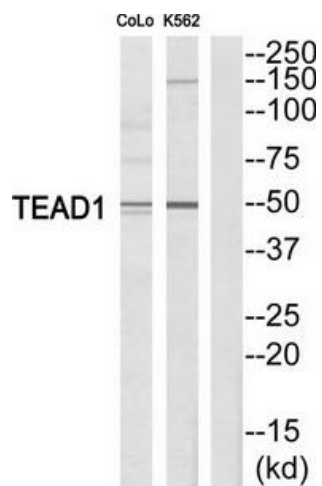
Product data:

Product Type:	Primary Antibodies
Applications:	WB
Recommended Dilution:	WB: 1:500~1:3000, ELISA: 1:40000
Reactivity:	Human, Mouse, Rat
Host:	Rabbit
Isotype:	IgG
Clonality:	Polyclonal
Immunogen:	The antiserum was produced against synthesized peptide derived from Internal of human TEAD1.
Formulation:	Phosphate buffered saline (without Mg ²⁺ and Ca ²⁺), pH 7.4, 150mM NaCl, 0.02% sodium azide and 50% glycerol.
Concentration:	lot specific
Purification:	The antibody was affinity-purified from rabbit antiserum by affinity-chromatography using epitope-specific immunogen.
Conjugation:	Unconjugated
Storage:	Store at -20°C as received.
Stability:	Stable for 12 months from date of receipt.
Gene Name:	TEA domain transcription factor 1
Database Link:	NP_068780 Entrez Gene 21676 MouseEntrez Gene 361630 RatEntrez Gene 7003 Human P28347
Synonyms:	AA; NTEF-1; REF1; TCF-13; TCF13; TEAD-1; TEF-1
Note:	TEAD1 antibody detects endogenous levels of total TEAD1 protein.
Protein Families:	Transcription Factors



[View online »](#)

Product images:



Western blot analysis of extracts from COLO205/K562 cells, using TEAD1 antibody. The lane on the right is treated with the synthesized peptide.