

Product datasheet for **TA314603**

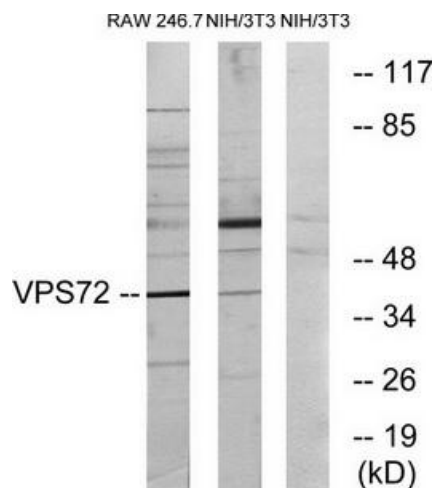
YL1 (VPS72) Rabbit Polyclonal Antibody

Product data:

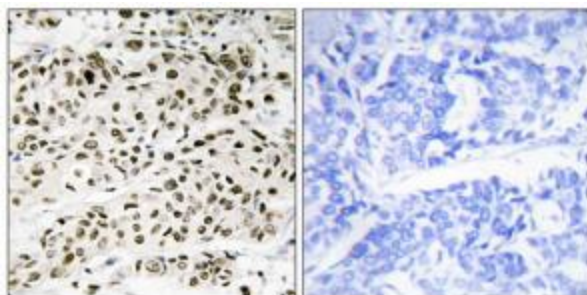
Product Type:	Primary Antibodies
Applications:	IHC, WB
Recommended Dilution:	WB: 1:500~1:3000, IHC: 1:50~1:100, ELISA: 1:40000
Reactivity:	Human, Mouse
Host:	Rabbit
Isotype:	IgG
Clonality:	Polyclonal
Immunogen:	The antiserum was produced against synthesized peptide derived from internal of human VPS72.
Formulation:	Phosphate buffered saline (without Mg ²⁺ and Ca ²⁺), pH 7.4, 150mM NaCl, 0.02% sodium azide and 50% glycerol.
Concentration:	lot specific
Purification:	The antibody was affinity-purified from rabbit antiserum by affinity-chromatography using epitope-specific immunogen.
Conjugation:	Unconjugated
Storage:	Store at -20°C as received.
Stability:	Stable for 12 months from date of receipt.
Gene Name:	vacuolar protein sorting 72 homolog
Database Link:	NP_005988 Entrez Gene 21427 Mouse Entrez Gene 6944 Human Q15906
Synonyms:	CFL1; Swc2; TCFL1; YL-1; YL1
Note:	VPS72 antibody detects endogenous levels of total VPS72 protein.
Protein Families:	Transcription Factors



[View online »](#)

Product images:


Western blot analysis of extracts from RAW264.7 cells and NIH/3T3 cells, using VPS72 antibody. The lane on the right is treated with the synthesized peptide.



Immunohistochemistry analysis of paraffin-embedded human breast carcinoma tissue using VPS72 antibody. The picture on the right is treated with the synthesized peptide.