

Product datasheet for **TA314601**

TCF7 Rabbit Polyclonal Antibody

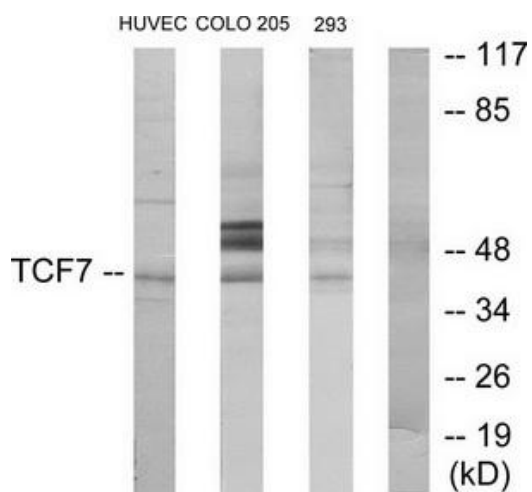
Product data:

Product Type:	Primary Antibodies
Applications:	WB
Recommended Dilution:	WB: 1:500~1:3000, ELISA: 1:10000
Reactivity:	Human, Mouse
Host:	Rabbit
Isotype:	IgG
Clonality:	Polyclonal
Immunogen:	The antiserum was produced against synthesized peptide derived from N-terminal of human TCF7.
Formulation:	Phosphate buffered saline (without Mg ²⁺ and Ca ²⁺), pH 7.4, 150mM NaCl, 0.02% sodium azide and 50% glycerol.
Concentration:	lot specific
Purification:	The antibody was affinity-purified from rabbit antiserum by affinity-chromatography using epitope-specific immunogen.
Conjugation:	Unconjugated
Storage:	Store at -20°C as received.
Stability:	Stable for 12 months from date of receipt.
Gene Name:	transcription factor 7 (T-cell specific, HMG-box)
Database Link:	NP_001128323 Entrez Gene 21414 Mouse Entrez Gene 6932 Human P36402
Synonyms:	TCF-1
Note:	TCF7 antibody detects endogenous levels of total TCF7 protein.
Protein Families:	Druggable Genome, ES Cell Differentiation/IPS, Transcription Factors
Protein Pathways:	Acute myeloid leukemia, Adherens junction, Arrhythmogenic right ventricular cardiomyopathy (ARVC), Basal cell carcinoma, Colorectal cancer, Endometrial cancer, Melanogenesis, Pathways in cancer, Prostate cancer, Thyroid cancer, Wnt signaling pathway



[View online »](#)

Product images:



Western blot analysis of extracts from HUVEC cells, COLO205 cells and 293 cells, using TCF7 antibody. The lane on the right is treated with the synthesized peptide.