

## Product datasheet for **TA314599**

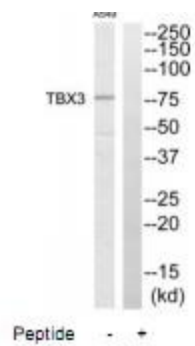
### TBX3 Rabbit Polyclonal Antibody

#### Product data:

Product Type:	Primary Antibodies
Applications:	WB
Recommended Dilution:	WB: 1:500~1:3000, ELISA: 1:20000
Reactivity:	Mouse, Human, Rat
Host:	Rabbit
Isotype:	IgG
Clonality:	Polyclonal
Immunogen:	The antiserum was produced against synthesized peptide derived from internal of human TBX3.
Formulation:	Phosphate buffered saline (without Mg <sup>2+</sup> and Ca <sup>2+</sup> ), pH 7.4, 150mM NaCl, 0.02% sodium azide and 50% glycerol.
Concentration:	lot specific
Purification:	The antibody was affinity-purified from rabbit antiserum by affinity-chromatography using epitope-specific immunogen.
Conjugation:	Unconjugated
Storage:	Store at -20°C as received.
Stability:	Stable for 12 months from date of receipt.
Gene Name:	T-box 3
Database Link:	<a href="#">NP_005987</a> <a href="#">Entrez Gene 21386 MouseEntrez Gene 353305 RatEntrez Gene 6926 Human O15119</a>
Synonyms:	TBX3-ISO; UMS; XHL
Note:	TBX3 antibody detects endogenous levels of total TBX3 protein.
Protein Families:	Druggable Genome, Transcription Factors



[View online »](#)

**Product images:**

Western blot analysis of extracts from A549 cells, using TBX3 antibody. The lane on the right is treated with the synthesized peptide.