

## Product datasheet for **TA314597**

### Elongin A (TCEB3) Rabbit Polyclonal Antibody

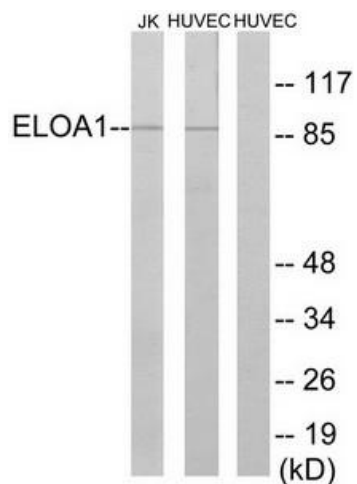
#### Product data:

Product Type:	Primary Antibodies
Applications:	IHC, WB
Recommended Dilution:	WB: 1:500~1:3000, IHC: 1:50~1:100, ELISA: 1:1000
Reactivity:	Human, Mouse, Rat
Host:	Rabbit
Isotype:	IgG
Clonality:	Polyclonal
Immunogen:	The antiserum was produced against synthesized peptide derived from internal of human ELOA1.
Formulation:	Phosphate buffered saline (without Mg <sup>2+</sup> and Ca <sup>2+</sup> ), pH 7.4, 150mM NaCl, 0.02% sodium azide and 50% glycerol.
Concentration:	lot specific
Purification:	The antibody was affinity-purified from rabbit antiserum by affinity-chromatography using epitope-specific immunogen.
Conjugation:	Unconjugated
Storage:	Store at -20°C as received.
Stability:	Stable for 12 months from date of receipt.
Gene Name:	transcription elongation factor B subunit 3
Database Link:	<a href="#">NP_003189</a> <a href="#">Entrez Gene 25562 Rat</a> <a href="#">Entrez Gene 27224 Mouse</a> <a href="#">Entrez Gene 6924 Human</a> <a href="#">Q14241</a>
Synonyms:	EloA; SIII; SIII p110; TCEB3A
Note:	ELOA1 antibody detects endogenous levels of total ELOA1 protein.
Protein Families:	Transcription Factors

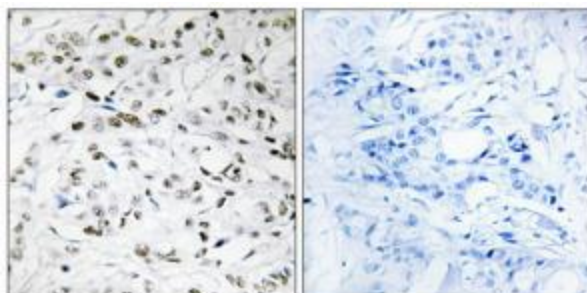


[View online »](#)

**Product images:**



Western blot analysis of extracts from Jurkat cells and HUVEC cells, using ELOA1 antibody. The lane on the right is treated with the synthesized peptide.



Immunohistochemistry analysis of paraffin-embedded human breast carcinoma tissue using ELOA1 antibody. The picture on the right is treated with the synthesized peptide.