

## Product datasheet for **TAF5**

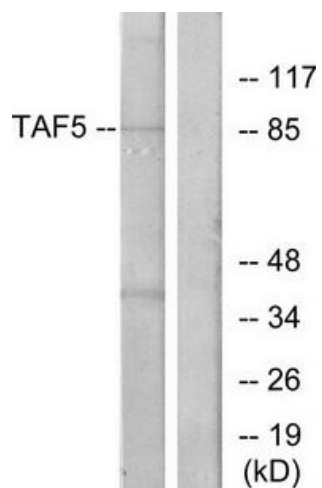
### TAF5 Rabbit Polyclonal Antibody

#### Product data:

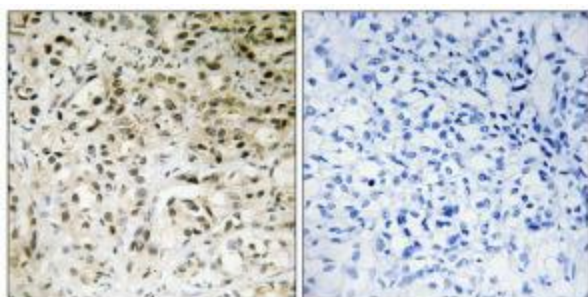
Product Type:	Primary Antibodies
Applications:	IHC, WB
Recommended Dilution:	WB: 1:500~1:3000, IHC: 1:50~1:100, ELISA: 1:1000
Reactivity:	Human, Mouse
Host:	Rabbit
Isotype:	IgG
Clonality:	Polyclonal
Immunogen:	The antiserum was produced against synthesized peptide derived from internal of human TAF5.
Formulation:	Phosphate buffered saline (without Mg <sup>2+</sup> and Ca <sup>2+</sup> ), pH 7.4, 150mM NaCl, 0.02% sodium azide and 50% glycerol.
Concentration:	lot specific
Purification:	The antibody was affinity-purified from rabbit antiserum by affinity-chromatography using epitope-specific immunogen.
Conjugation:	Unconjugated
Storage:	Store at -20°C as received.
Stability:	Stable for 12 months from date of receipt.
Gene Name:	TATA-box binding protein associated factor 5
Database Link:	<a href="#">NP_008882</a> <a href="#">Entrez Gene 226182 Mouse</a> <a href="#">Entrez Gene 6877 Human</a> <a href="#">Q15542</a>
Synonyms:	TAF2D; TAFII100
Note:	TAF5 antibody detects endogenous levels of total TAF5 protein.
Protein Families:	Transcription Factors
Protein Pathways:	Basal transcription factors



[View online »](#)

**Product images:**

Western blot analysis of extracts from A549 cells, using TAF5 antibody. The lane on the right is treated with the synthesized peptide.



Immunohistochemistry analysis of paraffin-embedded human liver carcinoma tissue using TAF5 antibody. The picture on the right is treated with the synthesized peptide.