

Product datasheet for **TA314590**

TAF4 Rabbit Polyclonal Antibody

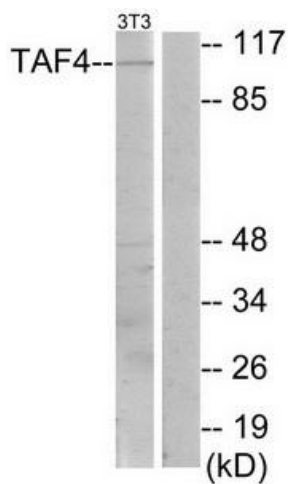
Product data:

Product Type:	Primary Antibodies
Applications:	WB
Recommended Dilution:	WB: 1:500~1:3000, ELISA: 1:5000
Reactivity:	Human
Host:	Rabbit
Isotype:	IgG
Clonality:	Polyclonal
Immunogen:	The antiserum was produced against synthesized peptide derived from internal of human TAF4.
Formulation:	Phosphate buffered saline (without Mg ²⁺ and Ca ²⁺), pH 7.4, 150mM NaCl, 0.02% sodium azide and 50% glycerol.
Concentration:	lot specific
Purification:	The antibody was affinity-purified from rabbit antiserum by affinity-chromatography using epitope-specific immunogen.
Conjugation:	Unconjugated
Storage:	Store at -20°C as received.
Stability:	Stable for 12 months from date of receipt.
Gene Name:	TATA-box binding protein associated factor 4
Database Link:	NP_003176 Entrez Gene 6874 Human O00268
Synonyms:	TAF2C; TAF2C1; TAF4A; TAFII130; TAFII135
Note:	TAF4 antibody detects endogenous levels of total TAF4 protein.
Protein Pathways:	Basal transcription factors, Huntington's disease



[View online »](#)

Product images:



Western blot analysis of extracts from NIH-3T3 cells, using TAF4 antibody. The lane on the right is treated with the synthesized peptide.