

Product datasheet for **TA314589**

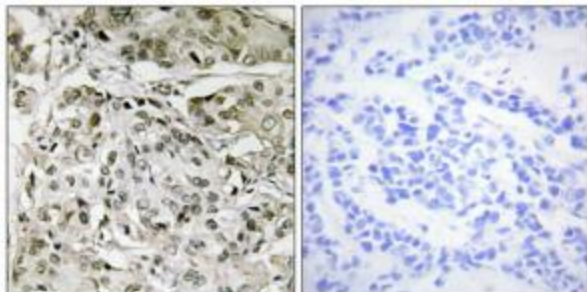
TAF1 Rabbit Polyclonal Antibody

Product data:

Product Type:	Primary Antibodies
Applications:	IHC
Recommended Dilution:	IHC: 1:50~1:100, ELISA: 1:10000
Reactivity:	Human, Mouse
Host:	Rabbit
Isotype:	IgG
Clonality:	Polyclonal
Immunogen:	The antiserum was produced against synthesized peptide derived from internal of human TAF1.
Formulation:	Phosphate buffered saline (without Mg ²⁺ and Ca ²⁺), pH 7.4, 150mM NaCl, 0.02% sodium azide and 50% glycerol.
Concentration:	lot specific
Purification:	The antibody was affinity-purified from rabbit antiserum by affinity-chromatography using epitope-specific immunogen.
Conjugation:	Unconjugated
Storage:	Store at -20°C as received.
Stability:	Stable for 12 months from date of receipt.
Gene Name:	TATA-box binding protein associated factor 1
Database Link:	NP_620278 Entrez Gene 270627 Mouse Entrez Gene 6872 Human P21675
Synonyms:	BA2R; CCG1; CCGS; DYT3; KAT4; MRXS33; N-TAF1; NSCL2; OF; P250; TAF(II)250; TAF1; TAF2A
Note:	TAF1 antibody detects endogenous levels of total TAF1 protein.
Protein Families:	Protein Kinase
Protein Pathways:	Basal transcription factors



[View online »](#)

Product images:

Immunohistochemistry analysis of paraffin-embedded human breast carcinoma tissue, using TAF1 antibody. The picture on the right is treated with the synthesized peptide.