

Product datasheet for **TA314588**

ADA2a (TADA2A) Rabbit Polyclonal Antibody

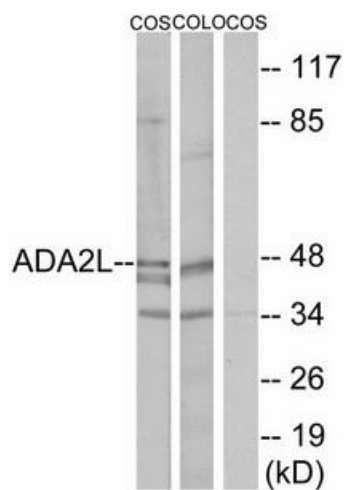
Product data:

Product Type:	Primary Antibodies
Applications:	WB
Recommended Dilution:	WB: 1:500~1:3000, ELISA: 1:10000
Reactivity:	Human, Mouse, Rat
Host:	Rabbit
Isotype:	IgG
Clonality:	Polyclonal
Immunogen:	The antiserum was produced against synthesized peptide derived from internal of human ADA2L.
Formulation:	Phosphate buffered saline (without Mg ²⁺ and Ca ²⁺), pH 7.4, 150mM NaCl, 0.02% sodium azide and 50% glycerol.
Concentration:	lot specific
Purification:	The antibody was affinity-purified from rabbit antiserum by affinity-chromatography using epitope-specific immunogen.
Conjugation:	Unconjugated
Storage:	Store at -20°C as received.
Stability:	Stable for 12 months from date of receipt.
Gene Name:	transcriptional adaptor 2A
Database Link:	NP_001159577 Entrez Gene 217031 MouseEntrez Gene 360581 RatEntrez Gene 6871 Human O75478
Synonyms:	ADA2; ADA2A; hADA2; KL04P; TADA2L
Note:	ADA2L antibody detects endogenous levels of total ADA2L protein.
Protein Families:	Transcription Factors



[View online »](#)

Product images:



Western blot analysis of extracts from COS-7 cells and COLO205 cells, using ADA2L antibody. The lane on the right is treated with the synthesized peptide.