

Product datasheet for **TA314585**

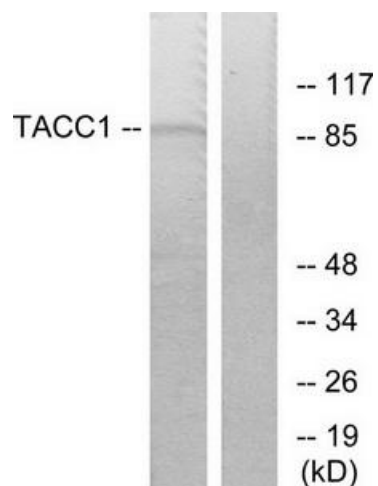
TACC1 Rabbit Polyclonal Antibody

Product data:

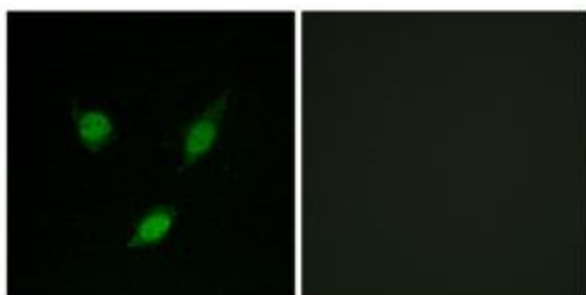
Product Type:	Primary Antibodies
Applications:	IF, WB
Recommended Dilution:	WB: 1:500~1:3000, IF: 1:100~1:500, ELISA: 1:10000
Reactivity:	Human, Mouse
Host:	Rabbit
Isotype:	IgG
Clonality:	Polyclonal
Immunogen:	The antiserum was produced against synthesized peptide derived from N-terminal of human TACC1.
Formulation:	Phosphate buffered saline (without Mg ²⁺ and Ca ²⁺), pH 7.4, 150mM NaCl, 0.02% sodium azide and 50% glycerol.
Concentration:	lot specific
Purification:	The antibody was affinity-purified from rabbit antiserum by affinity-chromatography using epitope-specific immunogen.
Conjugation:	Unconjugated
Storage:	Store at -20°C as received.
Stability:	Stable for 12 months from date of receipt.
Gene Name:	transforming acidic coiled-coil containing protein 1
Database Link:	NP_001116296 Entrez Gene 320165 Mouse Entrez Gene 6867 Human O75410
Synonyms:	Ga55
Note:	TACC1 antibody detects endogenous levels of total TACC1 protein.



[View online »](#)

Product images:

Western blot analysis of extracts from K562 cells, using TACC1 antibody. The lane on the right is treated with the synthesized peptide.



Immunofluorescence analysis of MCF-7 cells, using TACC1 antibody. The picture on the right is treated with the synthesized peptide.