

Product datasheet for **TA314581**

Synaptotagmin 1 (SYT1) Rabbit Polyclonal Antibody

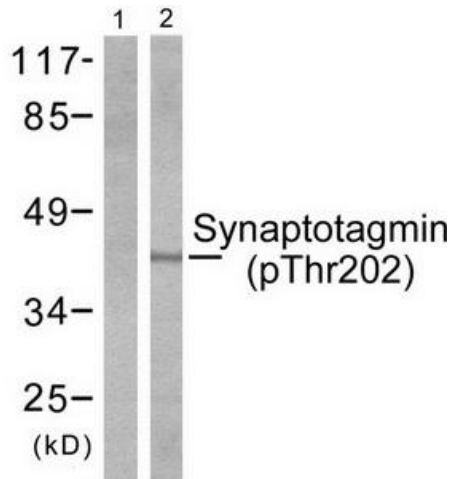
Product data:

Product Type:	Primary Antibodies
Applications:	IHC, WB
Recommended Dilution:	WB: 1:500~1000, IHC: 1:50~100, ELISA: 1:40000
Reactivity:	Human, Mouse, Rat
Modifications:	Phospho-specific
Host:	Rabbit
Isotype:	IgG
Clonality:	Polyclonal
Immunogen:	The antiserum was produced against synthesized phosphopeptide derived from human Synaptotagmin around the phosphorylation site of threonine 202(R-K-TP-L-N).
Formulation:	Phosphate buffered saline (without Mg ²⁺ and Ca ²⁺), pH 7.4, 150mM NaCl, 0.02% sodium azide and 50% glycerol.
Concentration:	lot specific
Purification:	The antibody was affinity-purified from rabbit antiserum by affinity-chromatography using epitope-specific immunogen.
Conjugation:	Unconjugated
Storage:	Store at -20°C as received.
Stability:	Stable for 12 months from date of receipt.
Gene Name:	synaptotagmin 1
Database Link:	NP_005630 Entrez Gene 20979 Mouse Entrez Gene 25716 Rat Entrez Gene 6857 Human P21579
Synonyms:	P65; SVP65; SYT
Note:	Synaptotagmin (phospho-Thr202) antibody detects endogenous levels of Synaptotagmin only when phosphorylated at threonine 202.
Protein Families:	Secreted Protein, Transmembrane

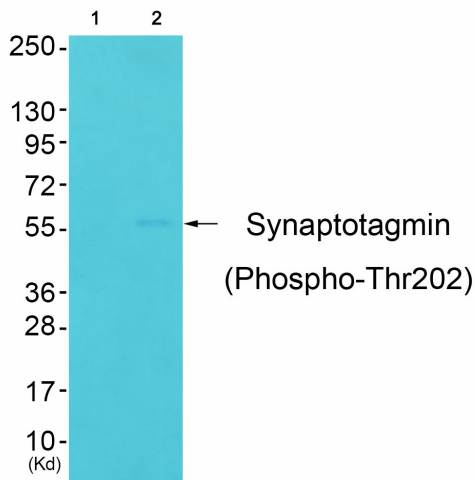


[View online »](#)

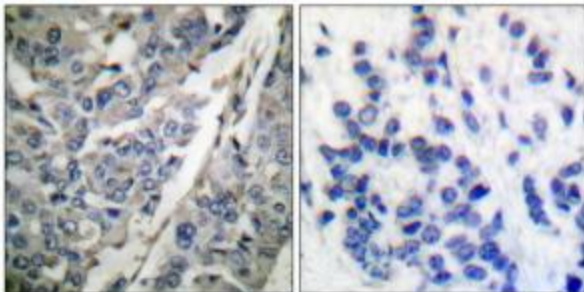
Product images:



Western blot analysis of extracts from HeLa cells treated with Forskolin (40nM, 30mins), using Synaptotagmin (phospho-Thr202) antibody. The lane on the right is treated with the synthesized peptide.



Western blot analysis of extracts from Colo cells (Lane 2), using Synaptotagmin (Phospho-Thr202) Antibody. The lane on the left is treated with synthesized peptide.



Immunohistochemical analysis of paraffin-embedded human breast carcinoma tissue using Synaptotagmin (phospho-Thr202) antibody. The picture on the right is treated with the synthesized peptide.