

## Product datasheet for **TA314575**

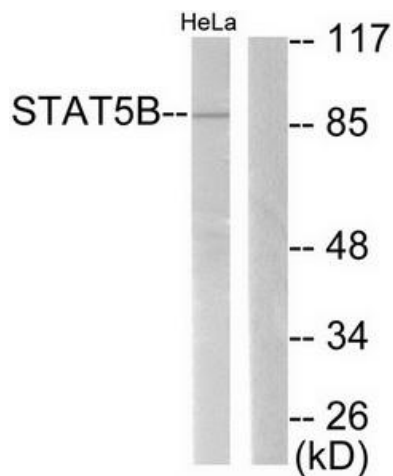
### STAT5B Rabbit Polyclonal Antibody

#### Product data:

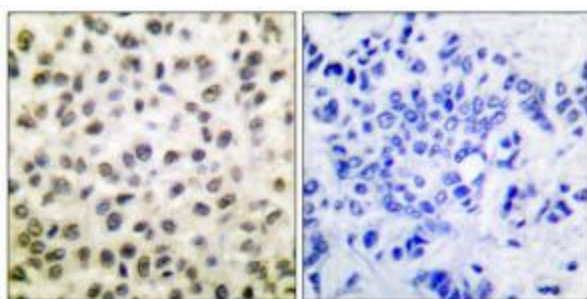
Product Type:	Primary Antibodies
Applications:	IHC, WB
Recommended Dilution:	WB: 1:500~1:3000, IHC: 1:50~1:100, ELISA: 1:40000
Reactivity:	Human, Mouse, Rat
Host:	Rabbit
Isotype:	IgG
Clonality:	Polyclonal
Immunogen:	The antiserum was produced against synthesized non-phosphopeptide derived from human STAT5B around the phosphorylation site of serine 731(A-P-S-P-A).
Formulation:	Phosphate buffered saline (without Mg <sup>2+</sup> and Ca <sup>2+</sup> ), pH 7.4, 150mM NaCl, 0.02% sodium azide and 50% glycerol.
Concentration:	lot specific
Purification:	The antibody was affinity-purified from rabbit antiserum by affinity-chromatography using epitope-specific immunogen.
Conjugation:	Unconjugated
Storage:	Store at -20°C as received.
Stability:	Stable for 12 months from date of receipt.
Gene Name:	signal transducer and activator of transcription 5B
Database Link:	<a href="#">NP_036580</a> <a href="#">Entrez Gene 20851 Mouse</a> <a href="#">Entrez Gene 25126 Rat</a> <a href="#">Entrez Gene 6777 Human</a> <a href="#">P51692</a>
Synonyms:	STAT5
Note:	STAT5B (Ab-731) antibody detects endogenous levels of total STAT5B protein.
Protein Families:	Druggable Genome, ES Cell Differentiation/IPS, Stem cell relevant signaling - JAK/STAT signaling pathway, Transcription Factors
Protein Pathways:	Acute myeloid leukemia, Chemokine signaling pathway, Chronic myeloid leukemia, ErbB signaling pathway, Jak-STAT signaling pathway, Pathways in cancer



[View online »](#)

**Product images:**

Western blot analysis of extracts from RAW264.7 cells, treated with EGF (200ng/ml 30min), using STAT5B (Ab-731) antibody (#TA314575, Line 1 and 2). The lane on the right is treated with the synthesized peptide.



Immunohistochemical analysis of paraffin-embedded human colon carcinoma tissue using STAT5B (Ab-731) antibody (#TA314575). The picture on the right is treated with the synthesized peptide.