

## Product datasheet for **TA314572**

### SS18 Rabbit Polyclonal Antibody

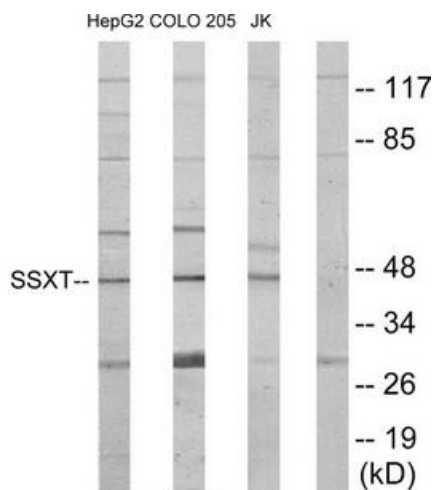
#### Product data:

Product Type:	Primary Antibodies
Applications:	WB
Recommended Dilution:	WB: 1:500~1:3000, ELISA: 1:1000
Reactivity:	Human, Mouse, Rat
Host:	Rabbit
Isotype:	IgG
Clonality:	Polyclonal
Immunogen:	The antiserum was produced against synthesized peptide derived from N-terminal of human SSXT.
Formulation:	Phosphate buffered saline (without Mg <sup>2+</sup> and Ca <sup>2+</sup> ), pH 7.4, 150mM NaCl, 0.02% sodium azide and 50% glycerol.
Concentration:	lot specific
Purification:	The antibody was affinity-purified from rabbit antiserum by affinity-chromatography using epitope-specific immunogen.
Conjugation:	Unconjugated
Storage:	Store at -20°C as received.
Stability:	Stable for 12 months from date of receipt.
Gene Name:	SS18, nBAF chromatin remodeling complex subunit
Database Link:	<a href="#">NP_001007560</a> <a href="#">Entrez Gene 268996</a> <a href="#">MouseEntrez Gene 361295</a> <a href="#">RatEntrez Gene 6760</a> <a href="#">Human Q15532</a>
Synonyms:	SSXT; SYT
Note:	SSXT antibody detects endogenous levels of total SSXT protein.
Protein Families:	Druggable Genome

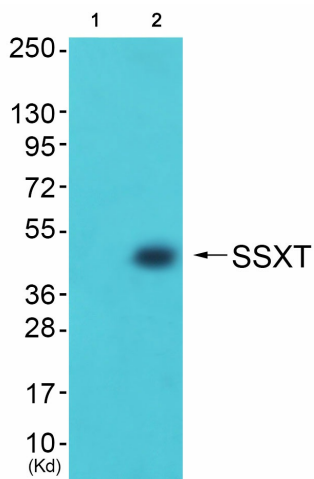


[View online »](#)

Product images:



Western blot analysis of extracts from HepG2 cells, COLO205 cells and Jurkat cells, using SSXT antibody. The lane on the right is treated with the synthesized peptide.



Western blot analysis of extracts from 3T3 cells (Lane 2), using SSXT Antibody. The lane on the left is treated with synthesized peptide.