

Product datasheet for TA314569

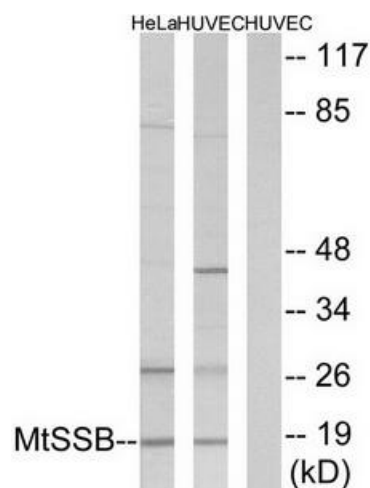
SSBP1 Rabbit Polyclonal Antibody

Product data:

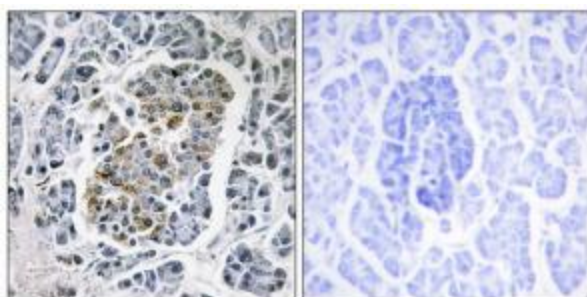
Product Type:	Primary Antibodies
Applications:	IF, IHC, WB
Recommended Dilution:	WB: 1:500~1:3000, IHC: 1:50~1:100, IF: 1:100~1:500, ELISA: 1:1000
Reactivity:	Human, Mouse, Rat
Host:	Rabbit
Isotype:	IgG
Clonality:	Polyclonal
Immunogen:	The antiserum was produced against synthesized peptide derived from internal of human MtSSB.
Formulation:	Phosphate buffered saline (without Mg ²⁺ and Ca ²⁺), pH 7.4, 150mM NaCl, 0.02% sodium azide and 50% glycerol.
Concentration:	lot specific
Purification:	The antibody was affinity-purified from rabbit antiserum by affinity-chromatography using epitope-specific immunogen.
Conjugation:	Unconjugated
Storage:	Store at -20°C as received.
Stability:	Stable for 12 months from date of receipt.
Gene Name:	single stranded DNA binding protein 1
Database Link:	NP_003134 Entrez Gene 54304 Rat Entrez Gene 381760 Mouse Entrez Gene 6742 Human Q04837
Synonyms:	Mt-SSB; mtSSB; SOSS-B1; SSBP
Note:	MtSSB antibody detects endogenous levels of total MtSSB protein.
Protein Families:	Druggable Genome
Protein Pathways:	DNA replication, Homologous recombination, Mismatch repair



[View online »](#)

Product images:

Western blot analysis of extracts from HeLa cells and HUVEC cells, using MtSSB antibody. The lane on the right is treated with the synthesized peptide.



Immunohistochemistry analysis of paraffin-embedded human pancreas tissue using MtSSB antibody. The picture on the right is treated with the synthesized peptide.



Immunofluorescence analysis of A549 cells, using MtSSB antibody. The picture on the right is treated with the synthesized peptide.