

Product datasheet for **TA314562**

Alpha Fodrin (SPTAN1) Rabbit Polyclonal Antibody

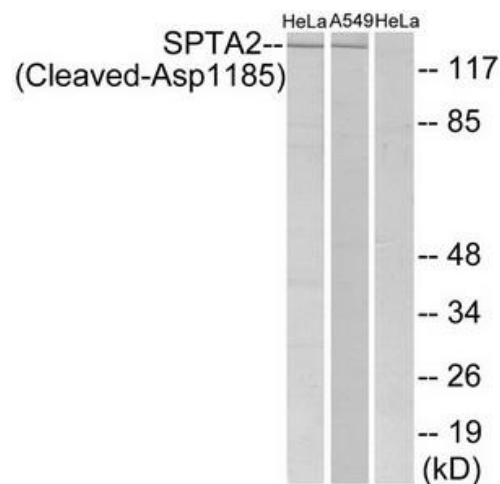
Product data:

Product Type:	Primary Antibodies
Applications:	WB
Recommended Dilution:	WB: 1:500~1:3000, ELISA: 1:10000
Reactivity:	Human
Host:	Rabbit
Isotype:	IgG
Clonality:	Polyclonal
Immunogen:	the antiserum was produced against synthesized peptide derived from human SPTA2.
Formulation:	Phosphate buffered saline (without Mg ²⁺ and Ca ²⁺), pH 7.4, 150mM NaCl, 0.02% sodium azide and 50% glycerol.
Concentration:	lot specific
Purification:	The antibody was affinity-purified from rabbit antiserum by affinity-chromatography using epitope-specific immunogen.
Conjugation:	Unconjugated
Storage:	Store at -20°C as received.
Stability:	Stable for 12 months from date of receipt.
Gene Name:	spectrin alpha, non-erythrocytic 1
Database Link:	NP_001123910 Entrez Gene 6709 Human Q13813
Synonyms:	EIEE5; NEAS; SPTA2
Note:	SPTA2 (Cleaved-Asp1185) antibody detects endogenous levels of fragment of activated SPTA2 resulting from cleavage adjacent to Asp1185.
Protein Families:	Druggable Genome
Protein Pathways:	Tight junction



[View online »](#)

Product images:



Western blot analysis of extracts from HeLa cells and A549 cells, all treated with etoposide (25uM, 24hours), using SPTA2 (Cleaved-Asp1185) antibody. The lane on the right is treated with the synthesized peptide.