

Product datasheet for **TA314544**

SLC6A8 Rabbit Polyclonal Antibody

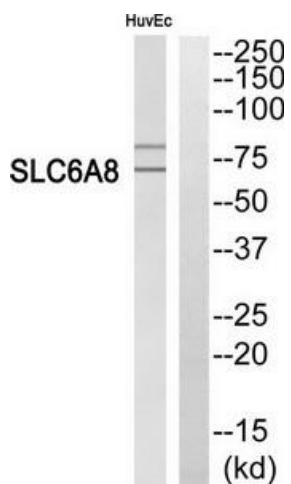
Product data:

Product Type:	Primary Antibodies
Applications:	WB
Recommended Dilution:	WB: 1:500~1:3000, ELISA: 1:10000
Reactivity:	Human, Mouse, Rat
Host:	Rabbit
Isotype:	IgG
Clonality:	Polyclonal
Immunogen:	The antiserum was produced against synthesized peptide derived from C-terminal of human SLC6A8.
Formulation:	Phosphate buffered saline (without Mg ²⁺ and Ca ²⁺), pH 7.4, 150mM NaCl, 0.02% sodium azide and 50% glycerol.
Concentration:	lot specific
Purification:	The antibody was affinity-purified from rabbit antiserum by affinity-chromatography using epitope-specific immunogen.
Conjugation:	Unconjugated
Storage:	Store at -20°C as received.
Stability:	Stable for 12 months from date of receipt.
Gene Name:	solute carrier family 6 member 8
Database Link:	NP_001136277 Entrez Gene 50690 Rat Entrez Gene 102857 Mouse Entrez Gene 6535 Human P48029
Synonyms:	CCDS1; CRT; CRTR; CT1; CTR5
Note:	SLC6A8 antibody detects endogenous levels of total SLC6A8 protein.
Protein Families:	Druggable Genome, Transmembrane



[View online »](#)

Product images:



Western blot analysis of extracts from HuvEc cells, using SLC6A8 antibody. The lane on the right is treated with the synthesized peptide.