

Product datasheet for **TA314541**

SLC5A3 Rabbit Polyclonal Antibody

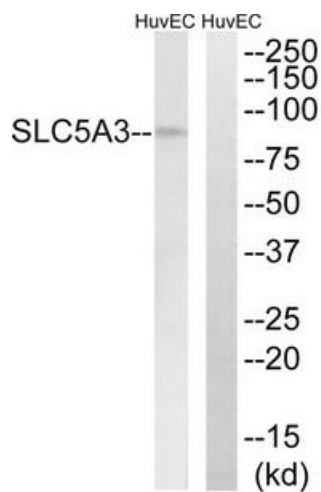
Product data:

Product Type:	Primary Antibodies
Applications:	WB
Recommended Dilution:	WB: 1:500~1:3000, ELISA: 1:10000
Reactivity:	Human, Mouse, Rat
Host:	Rabbit
Isotype:	IgG
Clonality:	Polyclonal
Immunogen:	The antiserum was produced against synthesized peptide derived from internal of human SLC5A3.
Formulation:	Phosphate buffered saline (without Mg ²⁺ and Ca ²⁺), pH 7.4, 150mM NaCl, 0.02% sodium azide and 50% glycerol.
Concentration:	lot specific
Purification:	The antibody was affinity-purified from rabbit antiserum by affinity-chromatography using epitope-specific immunogen.
Conjugation:	Unconjugated
Storage:	Store at -20°C as received.
Stability:	Stable for 12 months from date of receipt.
Gene Name:	solute carrier family 5 member 3
Database Link:	NP_008864 Entrez Gene 53881 Mouse Entrez Gene 114507 Rat Entrez Gene 6526 Human
Synonyms:	BCW2; SMIT; SMIT1; SMIT2
Note:	SLC5A3 antibody detects endogenous levels of total SLC5A3 protein.
Protein Families:	Transmembrane



[View online »](#)

Product images:



Western blot analysis of extracts from HuvEc cells, using SLC5A3 antibody. The lane on the right is treated with the synthesized peptide.