

## Product datasheet for **TA314539**

### Glucose Transporter GLUT3 (SLC2A3) Rabbit Polyclonal Antibody

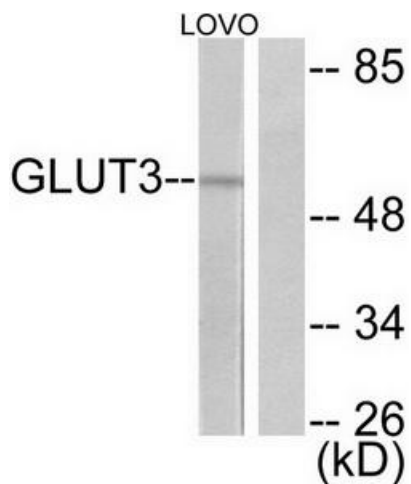
#### Product data:

Product Type:	Primary Antibodies
Applications:	IHC, WB
Recommended Dilution:	WB: 1:500~1:3000, IHC: 1:50~1:100, ELISA: 1:1000
Reactivity:	Human
Host:	Rabbit
Isotype:	IgG
Clonality:	Polyclonal
Immunogen:	The antiserum was produced against synthesized peptide derived from human GLUT3.
Formulation:	Phosphate buffered saline (without Mg <sup>2+</sup> and Ca <sup>2+</sup> ), pH 7.4, 150mM NaCl, 0.02% sodium azide and 50% glycerol.
Purification:	The antibody was affinity-purified from rabbit antiserum by affinity-chromatography using epitope-specific immunogen.
Conjugation:	Unconjugated
Storage:	Store at -20°C as received.
Stability:	Stable for 12 months from date of receipt.
Gene Name:	solute carrier family 2 member 3
Database Link:	<a href="#">NP_008862</a> <a href="#">Entrez Gene 6515 Human</a> <a href="#">P11169</a>
Synonyms:	GLUT3
Note:	The antiserum was produced against synthesized peptide derived from human GLUT3.
Protein Families:	Transmembrane

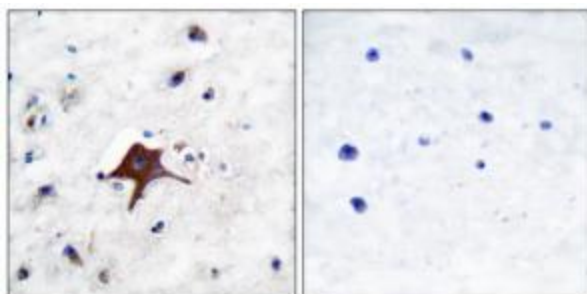


[View online »](#)

Product images:



Western blot analysis of extracts from LOVO cells, using GLUT3 antibody (#TA314539). The lane on the right is treated with the synthesized peptide.



Immunohistochemical analysis of paraffin-embedded human brain tissue using GLUT3 antibody (#TA314539). The picture on the right is treated with the synthesized peptide.