

Product datasheet for **TA314536**

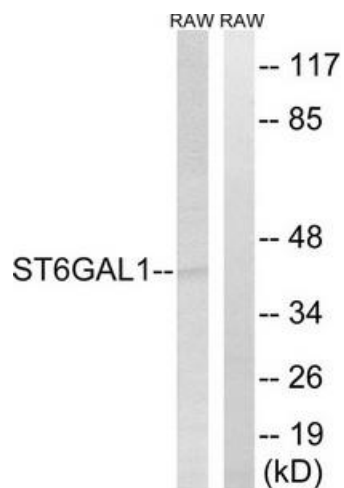
CDw75 (ST6GAL1) Rabbit Polyclonal Antibody

Product data:

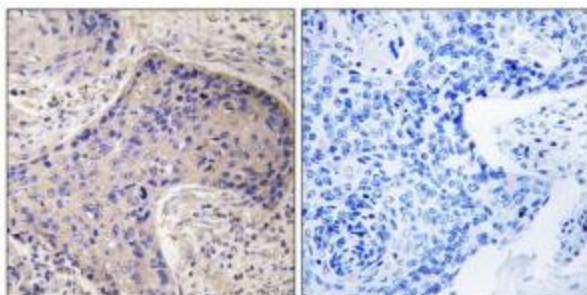
Product Type:	Primary Antibodies
Applications:	IHC, WB
Recommended Dilution:	WB: 1:500~1:3000, IHC: 1:50~1:100, ELISA: 1:40000
Reactivity:	Human, Mouse, Rat
Host:	Rabbit
Isotype:	IgG
Clonality:	Polyclonal
Immunogen:	The antiserum was produced against synthesized peptide derived from internal of human ST6GAL1.
Formulation:	Phosphate buffered saline (without Mg ²⁺ and Ca ²⁺), pH 7.4, 150mM NaCl, 0.02% sodium azide and 50% glycerol.
Concentration:	lot specific
Purification:	The antibody was affinity-purified from rabbit antiserum by affinity-chromatography using epitope-specific immunogen.
Conjugation:	Unconjugated
Storage:	Store at -20°C as received.
Stability:	Stable for 12 months from date of receipt.
Gene Name:	ST6 beta-galactoside alpha-2,6-sialyltransferase 1
Database Link:	NP_003023 Entrez Gene 20440 Mouse Entrez Gene 25197 Rat Entrez Gene 6480 Human P15907
Synonyms:	SIAT1; ST6Gal1; ST6N
Note:	ST6GAL1 antibody detects endogenous levels of total ST6GAL1 protein.
Protein Families:	Secreted Protein
Protein Pathways:	Metabolic pathways, N-Glycan biosynthesis



[View online »](#)

Product images:

Western blot analysis of extracts from RAW264.7 cells, using ST6GAL1 antibody. The lane on the right is treated with the synthesized peptide.



Immunohistochemistry analysis of paraffin-embedded human prostate carcinoma tissue, using ST6GAL1 antibody. The picture on the right is treated with the synthesized peptide.