

## Product datasheet for **TA314531S**

### SGK1 Rabbit Polyclonal Antibody

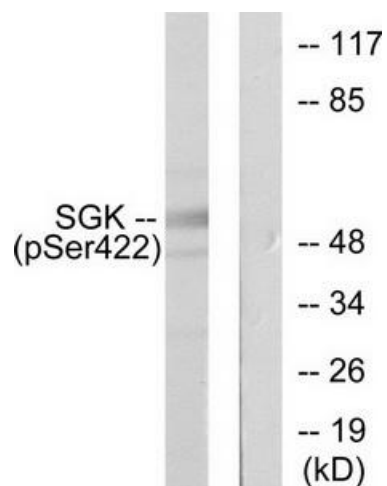
#### Product data:

|                       |   |
|-----------------------|---|
| Product Type:         | Primary Antibodies  |
| Applications:         | IHC, WB   |
| Recommended Dilution: | WB: 1:500~1:3000, IHC: 1:50~1:100, ELISA: 1:40000   |
| Reactivity:           | Human, Mouse, Rat   |
| Modifications:        | Phospho-specific  |
| Host:                 | Rabbit  |
| Isotype:              | IgG   |
| Clonality:            | Polyclonal  |
| Immunogen:            | The antiserum was produced against synthesized phosphopeptide derived from human SGK around the phosphorylation site of serine 422 (G-F-SP-Y-A)                             |
| Formulation:          | Phosphate buffered saline (without Mg <sup>2+</sup> and Ca <sup>2+</sup> ), pH 7.4, 150mM NaCl, 0.02% sodium azide and 50% glycerol.  |
| Concentration:        | lot specific  |
| Purification:         | The antibody was affinity-purified from rabbit antiserum by affinity-chromatography using epitope-specific immunogen.   |
| Conjugation:          | Unconjugated  |
| Storage:              | Store at -20°C as received.   |
| Stability:            | Stable for 12 months from date of receipt.  |
| Gene Name:            | serum/glucocorticoid regulated kinase 1   |
| Database Link:        | <a href="#">NP_005618</a><br><a href="#">Entrez Gene 20393 Mouse</a> <a href="#">Entrez Gene 29517 Rat</a> <a href="#">Entrez Gene 6446 Human</a><br><a href="#">O00141</a> |
| Synonyms:             | SGK   |
| Note:                 | SGK (phospho-Ser422) antibody detects endogenous levels of SGK only when phosphorylated at serine 422   |
| Protein Families:     | Druggable Genome, Protein Kinase  |

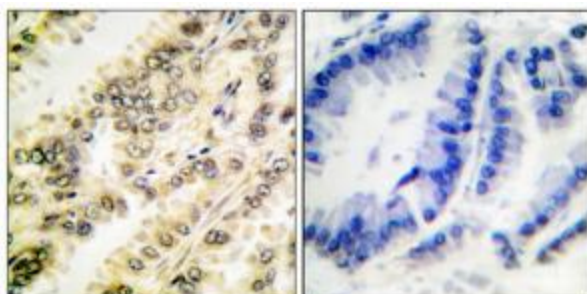


[View online »](#)

## Product images:



Western blot analysis of extracts from HeLa cells treated with Insulin (0.01U/ml, 15mins), using SGK (phospho-Ser422) antibody ([TA314531], Line 1 and 2)The lane on the right is treated with the synthesized peptide.



Immunohistochemical analysis of paraffin-embedded human breast carcinoma tissue using SGK (phospho-Ser422) antibody ([TA314531]).The picture on the right is treated with the synthesized peptide.