

## Product datasheet for **TA314531**

### SGK1 Rabbit Polyclonal Antibody

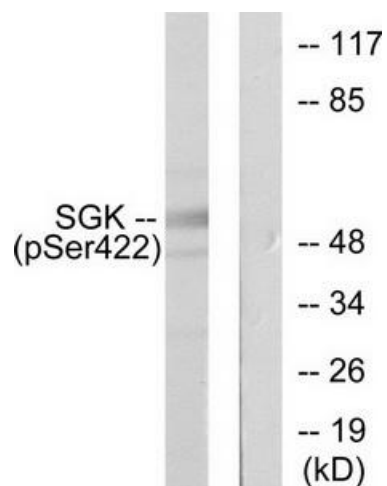
#### Product data:

Product Type:	Primary Antibodies
Applications:	IHC, WB
Recommended Dilution:	WB: 1:500~1:3000, IHC: 1:50~1:100, ELISA: 1:40000
Reactivity:	Human, Mouse, Rat
Modifications:	Phospho-specific
Host:	Rabbit
Isotype:	IgG
Clonality:	Polyclonal
Immunogen:	The antiserum was produced against synthesized phosphopeptide derived from human SGK around the phosphorylation site of serine 422 (G-F-SP-Y-A)
Formulation:	Phosphate buffered saline (without Mg <sup>2+</sup> and Ca <sup>2+</sup> ), pH 7.4, 150mM NaCl, 0.02% sodium azide and 50% glycerol.
Concentration:	lot specific
Purification:	The antibody was affinity-purified from rabbit antiserum by affinity-chromatography using epitope-specific immunogen.
Conjugation:	Unconjugated
Storage:	Store at -20°C as received.
Stability:	Stable for 12 months from date of receipt.
Gene Name:	serum/glucocorticoid regulated kinase 1
Database Link:	<a href="#">NP_005618</a> <a href="#">Entrez Gene 20393 Mouse</a> <a href="#">Entrez Gene 29517 Rat</a> <a href="#">Entrez Gene 6446 Human</a> <a href="#">O00141</a>
Synonyms:	SGK
Note:	SGK (phospho-Ser422) antibody detects endogenous levels of SGK only when phosphorylated at serine 422
Protein Families:	Druggable Genome, Protein Kinase

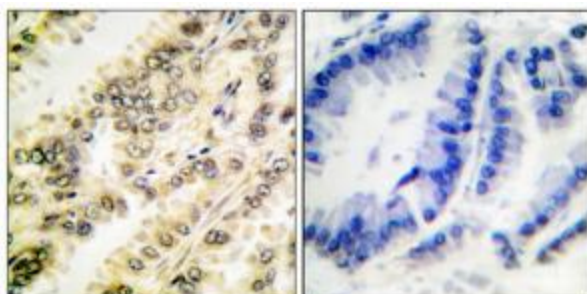


[View online »](#)

## Product images:



Western blot analysis of extracts from HeLa cells treated with Insulin (0.01U/ml, 15mins), using SGK (phospho-Ser422) antibody (#TA314531, Line 1 and 2)The lane on the right is treated with the synthesized peptide.



Immunohistochemical analysis of paraffin-embedded human breast carcinoma tissue using SGK (phospho-Ser422) antibody (#TA314531).The picture on the right is treated with the synthesized peptide.