

Product datasheet for **TA314528**

SGK1 Rabbit Polyclonal Antibody

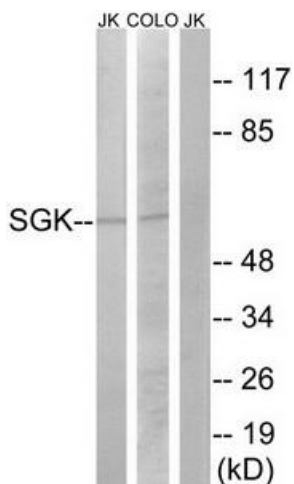
Product data:

Product Type:	Primary Antibodies
Applications:	IHC, WB
Recommended Dilution:	WB: 1:500~1:3000, IHC: 1:50~1:100, ELISA: 1:5000
Reactivity:	Human, Mouse, Rat
Host:	Rabbit
Isotype:	IgG
Clonality:	Polyclonal
Immunogen:	The antiserum was produced against synthesized non-phosphopeptide derived from human SGK around the phosphorylation site of serine 422 (G-F-SP-Y-A).
Formulation:	Phosphate buffered saline (without Mg ²⁺ and Ca ²⁺), pH 7.4, 150mM NaCl, 0.02% sodium azide and 50% glycerol.
Concentration:	lot specific
Purification:	The antibody was affinity-purified from rabbit antiserum by affinity-chromatography using epitope-specific immunogen.
Conjugation:	Unconjugated
Storage:	Store at -20°C as received.
Stability:	Stable for 12 months from date of receipt.
Gene Name:	serum/glucocorticoid regulated kinase 1
Database Link:	NP_001137148 Entrez Gene 20393 Mouse Entrez Gene 29517 Rat Entrez Gene 6446 Human O00141
Synonyms:	SGK
Note:	SGK (Ab-422) antibody detects endogenous levels of total SGK protein.
Protein Families:	Druggable Genome, Protein Kinase

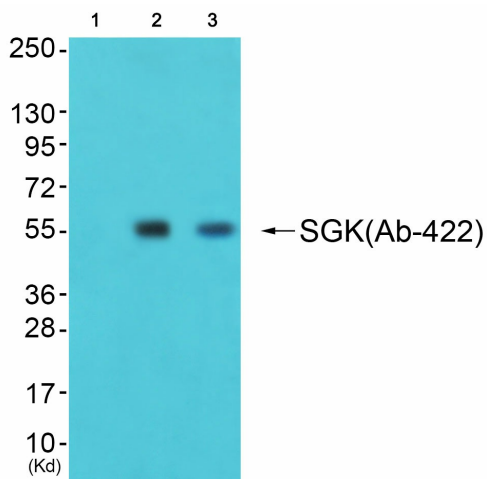


[View online »](#)

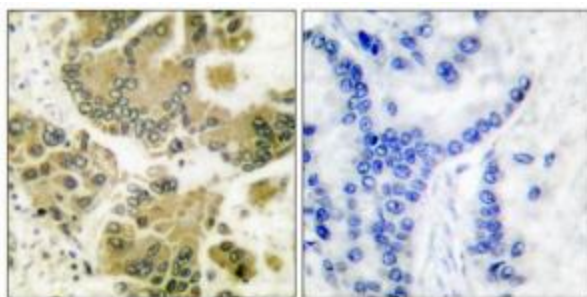
Product images:



Western blot analysis of extracts from Jurkat cells, using SGK (Ab-422) antibody. The lane on the right is treated with the synthesized peptide.



Western blot analysis of extracts from colo cells (Lane 2) and K562 cells (Lane 3), using SGK (Ab-422) Antibody. The lane on the left is treated with synthesized peptide.



Immunohistochemical analysis of paraffin-embedded human lung carcinoma tissue using SGK (Ab-422) antibody. The picture on the right is treated with the synthesized peptide.