

Product datasheet for **TA314526**

alpha Sarcoglycan (SGCA) Rabbit Polyclonal Antibody

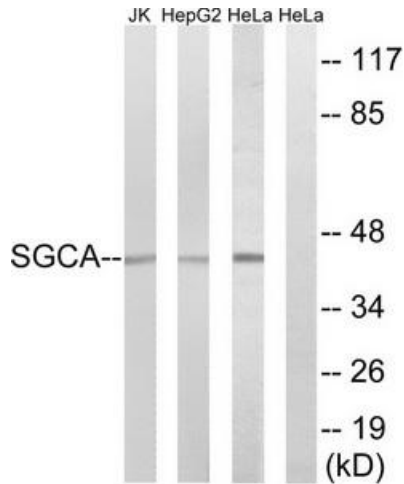
Product data:

| | |
|-----------------------|---|
| Product Type: | Primary Antibodies |
| Applications: | WB |
| Recommended Dilution: | WB: 1:500~1:3000, ELISA: 1:40000 |
| Reactivity: | Human, Mouse |
| Host: | Rabbit |
| Isotype: | IgG |
| Clonality: | Polyclonal |
| Immunogen: | The antiserum was produced against synthesized peptide derived from internal of human SGCA. |
| Formulation: | Phosphate buffered saline (without Mg ²⁺ and Ca ²⁺), pH 7.4, 150mM NaCl, 0.02% sodium azide and 50% glycerol. |
| Purification: | The antibody was affinity-purified from rabbit antiserum by affinity-chromatography using epitope-specific immunogen. |
| Conjugation: | Unconjugated |
| Storage: | Store at -20°C as received. |
| Stability: | Stable for 12 months from date of receipt. |
| Gene Name: | sarcoglycan alpha |
| Database Link: | NP_000014 Entrez Gene 20391 Mouse Entrez Gene 6442 Human Q16586 |
| Synonyms: | 50-DAG; A2; adhalin; ADL; DAG2; DMDA2; LGMD2D; SCARMD1 |
| Note: | SGCA antibody detects endogenous levels of total SGCA protein. |
| Protein Families: | Druggable Genome, Transmembrane |
| Protein Pathways: | Arrhythmogenic right ventricular cardiomyopathy (ARVC), Dilated cardiomyopathy, Hypertrophic cardiomyopathy (HCM), Viral myocarditis |



[View online »](#)

Product images:



Western blot analysis of extracts from Jurkat cells, HepG2 cells and HeLa cells, using SGCA antibody. The lane on the right is treated with the synthesized peptide.

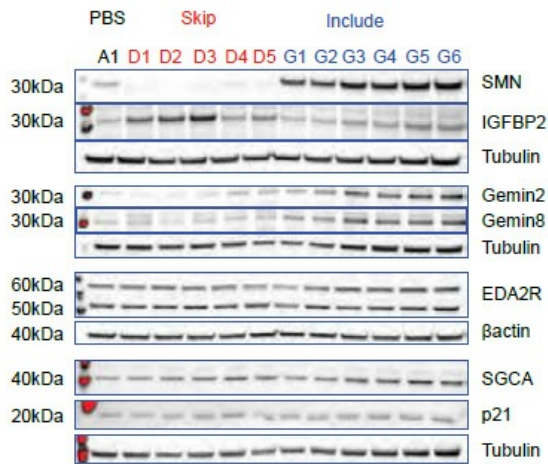


Figure from citation: Western blot analysis of SGCA protein level by using anti-SGCA antibody in mouse spinal cord tissue. Dilution: 1:1000 [View Citation](#)