

Product datasheet for **TA314523**

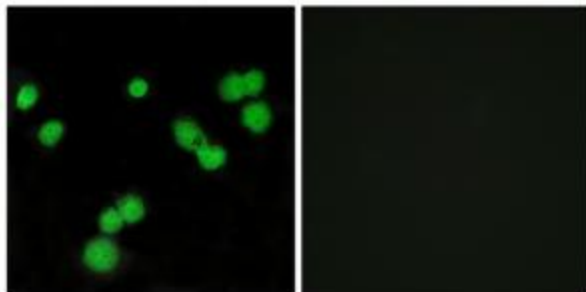
SFRS5 (SRSF5) Rabbit Polyclonal Antibody

Product data:

Product Type:	Primary Antibodies
Applications:	IF
Recommended Dilution:	IF: 1:500~1:1000, ELISA: 1:20000
Reactivity:	Human, Mouse, Rat
Host:	Rabbit
Isotype:	IgG
Clonality:	Polyclonal
Immunogen:	he antiserum was produced against synthesized peptide derived from internal of human SFRS5.
Formulation:	Phosphate buffered saline (without Mg ²⁺ and Ca ²⁺), pH 7.4, 150mM NaCl, 0.02% sodium azide and 50% glycerol.
Concentration:	lot specific
Purification:	The antibody was affinity-purified from rabbit antiserum by affinity-chromatography using epitope-specific immunogen.
Conjugation:	Unconjugated
Storage:	Store at -20°C as received.
Stability:	Stable for 12 months from date of receipt.
Gene Name:	serine/arginine-rich splicing factor 5
Database Link:	NP_008856 Entrez Gene 20384 MouseEntrez Gene 29667 RatEntrez Gene 6430 Human Q13243
Synonyms:	HRS; SFRS5; SRP40
Note:	SFRS5 antibody detects endogenous levels of total SFRS5 protein.
Protein Pathways:	Spliceosome



[View online »](#)

Product images:

Immunofluorescence analysis of MCF-7 cells, using SFRS5 antibody. The picture on the right is treated with the synthesized peptide.