

## Product datasheet for **TA314521**

### SFRS3 (SRSF3) Rabbit Polyclonal Antibody

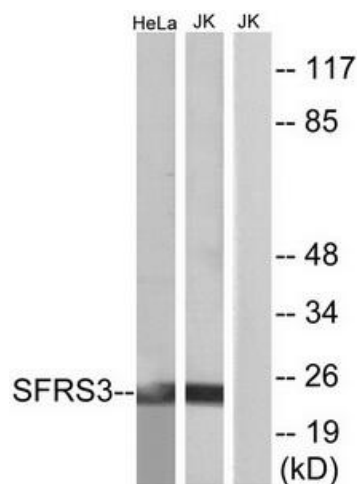
#### Product data:

Product Type:	Primary Antibodies
Applications:	IF, WB
Recommended Dilution:	WB: 1:500~1:3000, IF: 1:100~1:500, ELISA: 1:5000
Reactivity:	Human, Mouse
Host:	Rabbit
Isotype:	IgG
Clonality:	Polyclonal
Immunogen:	The antiserum was produced against synthesized peptide derived from internal of human SFRS3.
Formulation:	Phosphate buffered saline (without Mg <sup>2+</sup> and Ca <sup>2+</sup> ), pH 7.4, 150mM NaCl, 0.02% sodium azide and 50% glycerol.
Concentration:	lot specific
Purification:	The antibody was affinity-purified from rabbit antiserum by affinity-chromatography using epitope-specific immunogen.
Conjugation:	Unconjugated
Storage:	Store at -20°C as received.
Stability:	Stable for 12 months from date of receipt.
Gene Name:	serine/arginine-rich splicing factor 3
Database Link:	<a href="#">NP_003008</a> <a href="#">Entrez Gene 20383 Mouse</a> <a href="#">Entrez Gene 6428 Human</a> <a href="#">P84103</a>
Synonyms:	SFRS3; SRp20
Note:	SFRS3 antibody detects endogenous levels of total SFRS3 protein.
Protein Families:	Stem cell - Pluripotency
Protein Pathways:	Spliceosome

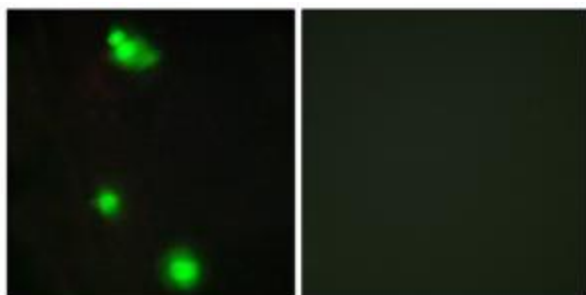


[View online »](#)

## Product images:



Western blot analysis of extracts from HeLa cells and Jurkat cells, using SFRS3 antibody. The lane on the right is treated with the synthesized peptide.



Immunofluorescence analysis of MCF-7 cells, using SFRS3 antibody. The picture on the right is treated with the synthesized peptide.