

Product datasheet for **TA314520**

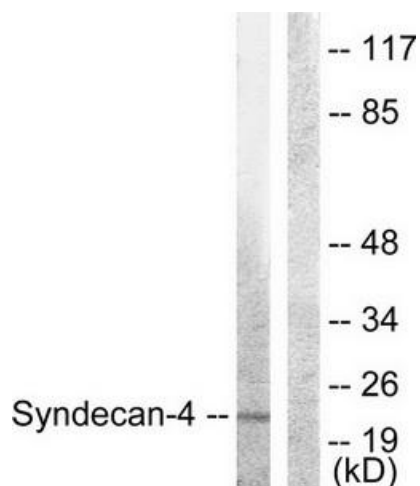
Syndecan 4 (SDC4) Rabbit Polyclonal Antibody

Product data:

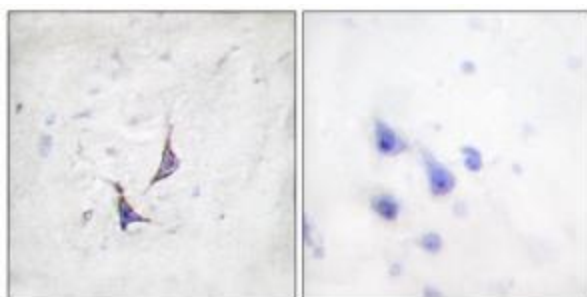
Product Type:	Primary Antibodies
Applications:	IF, IHC, WB
Recommended Dilution:	WB: 1:500~1:3000, IHC: 1:50~1:100, IF: 1:100~1:500, ELISA: 1:40000
Reactivity:	Human, Mouse, Rat
Host:	Rabbit
Isotype:	IgG
Clonality:	Polyclonal
Immunogen:	The antiserum was produced against synthesized non-phosphopeptide derived from human Syndecan4 around the phosphorylation site of serine 179 (E-G-SP-Y-D).
Formulation:	Phosphate buffered saline (without Mg ²⁺ and Ca ²⁺), pH 7.4, 150mM NaCl, 0.02% sodium azide and 50% glycerol.
Concentration:	lot specific
Purification:	The antibody was affinity-purified from rabbit antiserum by affinity-chromatography using epitope-specific immunogen.
Conjugation:	Unconjugated
Storage:	Store at -20°C as received.
Stability:	Stable for 12 months from date of receipt.
Gene Name:	syndecan 4
Database Link:	NP_002990 Entrez Gene 20971 Mouse Entrez Gene 24771 Rat Entrez Gene 6385 Human P31431
Synonyms:	SYND4
Note:	Syndecan4 (Ab-179) antibody detects endogenous levels of total Syndecan4 protein.
Protein Families:	Druggable Genome, Transmembrane
Protein Pathways:	Cell adhesion molecules (CAMs), ECM-receptor interaction


[View online »](#)

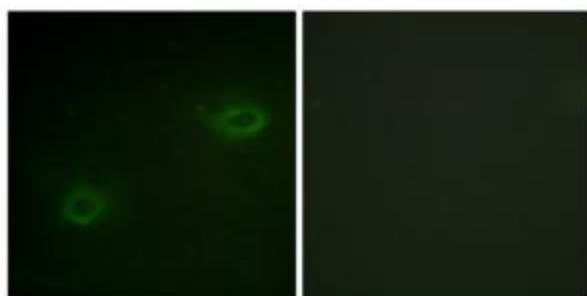
Product images:



Western blot analysis of extracts from HepG2 cells, using Syndecan4 (Ab-179) antibody. The lane on the right is treated with the synthesized peptide.



Immunohistochemistry analysis of paraffin-embedded human brain tissue using Syndecan4 (Ab-179) antibody. The picture on the right is treated with the synthesized peptide.



Immunofluorescence analysis of HeLa cells, using Syndecan4 (Ab-179) antibody. The picture on the right is treated with the synthesized peptide.