

Product datasheet for **TA314516**

SCNN1D Rabbit Polyclonal Antibody

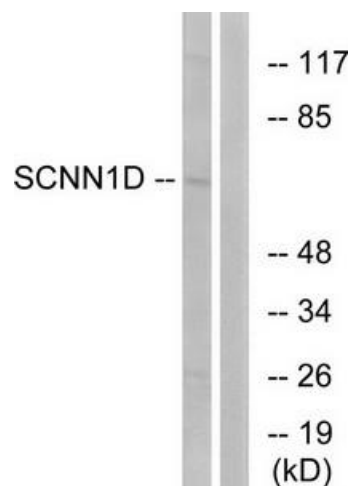
Product data:

Product Type:	Primary Antibodies
Applications:	IF, WB
Recommended Dilution:	WB: 1:500~1:3000, IF: 1:100~1:500, ELISA: 1:20000
Reactivity:	Human
Host:	Rabbit
Isotype:	IgG
Clonality:	Polyclonal
Immunogen:	The antiserum was produced against synthesized peptide derived from internal of human SCNN1D.
Formulation:	Phosphate buffered saline (without Mg ²⁺ and Ca ²⁺), pH 7.4, 150mM NaCl, 0.02% sodium azide and 50% glycerol.
Concentration:	lot specific
Purification:	The antibody was affinity-purified from rabbit antiserum by affinity-chromatography using epitope-specific immunogen.
Conjugation:	Unconjugated
Storage:	Store at -20°C as received.
Stability:	Stable for 12 months from date of receipt.
Gene Name:	sodium channel epithelial 1 delta subunit
Database Link:	NP_001123885 Entrez Gene 6339 Human P51172
Synonyms:	dNaCh; ENaCd; ENaCdelta; SCNED
Note:	SCNN1D antibody detects endogenous levels of total SCNN1D protein.
Protein Families:	Druggable Genome, Ion Channels: Other, Transmembrane



[View online »](#)

Product images:



Western blot analysis of extracts from RAW264.7 cells, using SCNN1D antibody. The lane on the right is treated with the synthesized peptide.



Immunofluorescence analysis of A549 cells, using SCNN1D antibody. The picture on the right is treated with the synthesized peptide.