

Product datasheet for **TA314513**

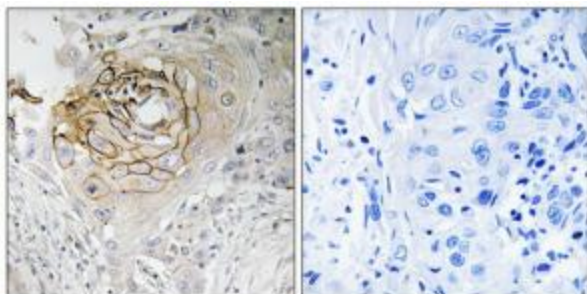
Nav1.7 (SCN9A) Rabbit Polyclonal Antibody

Product data:

Product Type:	Primary Antibodies
Applications:	IHC
Recommended Dilution:	IHC: 1:50~1:100, ELISA: 1:40000
Reactivity:	Human, Mouse, Rat
Host:	Rabbit
Isotype:	IgG
Clonality:	Polyclonal
Immunogen:	The antiserum was produced against synthesized peptide derived from internal of human SCN9A.
Formulation:	Phosphate buffered saline (without Mg ²⁺ and Ca ²⁺), pH 7.4, 150mM NaCl, 0.02% sodium azide and 50% glycerol.
Concentration:	lot specific
Purification:	The antibody was affinity-purified from rabbit antiserum by affinity-chromatography using epitope-specific immunogen.
Conjugation:	Unconjugated
Storage:	Store at -20°C as received.
Stability:	Stable for 12 months from date of receipt.
Gene Name:	sodium voltage-gated channel alpha subunit 9
Database Link:	NP_002968 Entrez Gene 20274 Mouse Entrez Gene 78956 Rat Entrez Gene 6335 Human Q15858
Synonyms:	ETHA; FEB3B; GEFSP7; HSN2D; Nav1.7; NE-NA; NENA; PN1; SFNP
Note:	SCN9A antibody detects endogenous levels of total SCN9A protein.
Protein Families:	Druggable Genome, Ion Channels: Sodium



[View online »](#)

Product images:

Immunohistochemistry analysis of paraffin-embedded human lung carcinoma tissue using SCN9A antibody. The picture on the right is treated with the synthesized peptide.