

Product datasheet for TA314512

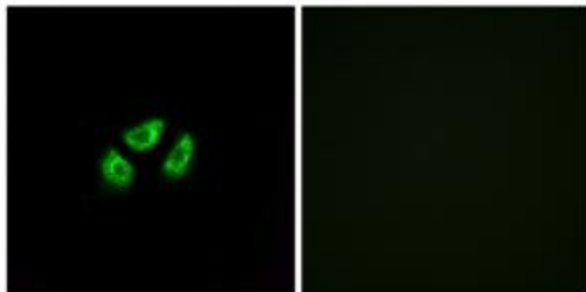
SCN7A Rabbit Polyclonal Antibody

Product data:

Product Type:	Primary Antibodies
Applications:	IF
Recommended Dilution:	IF: 1:100~1:500, ELISA: 1:20000
Reactivity:	Human
Host:	Rabbit
Isotype:	IgG
Clonality:	Polyclonal
Immunogen:	The antiserum was produced against synthesized peptide derived from internal of human SCN7A.
Formulation:	Phosphate buffered saline (without Mg ²⁺ and Ca ²⁺), pH 7.4, 150mM NaCl, 0.02% sodium azide and 50% glycerol.
Concentration:	lot specific
Purification:	The antibody was affinity-purified from rabbit antiserum by affinity-chromatography using epitope-specific immunogen.
Conjugation:	Unconjugated
Storage:	Store at -20°C as received.
Stability:	Stable for 12 months from date of receipt.
Gene Name:	sodium voltage-gated channel alpha subunit 7
Database Link:	NP_002967 Entrez Gene 6332 Human Q01118
Synonyms:	NaG; Nav2.1; Nav2.2; SCN6A
Note:	SCN7A antibody detects endogenous levels of total SCN7A protein.
Protein Families:	Druggable Genome, Ion Channels: Other, Transmembrane



[View online »](#)

Product images:

Immunofluorescence analysis of A549 cells, using SCN7A antibody. The picture on the right is treated with the synthesized peptide.