

Product datasheet for **TA314511**

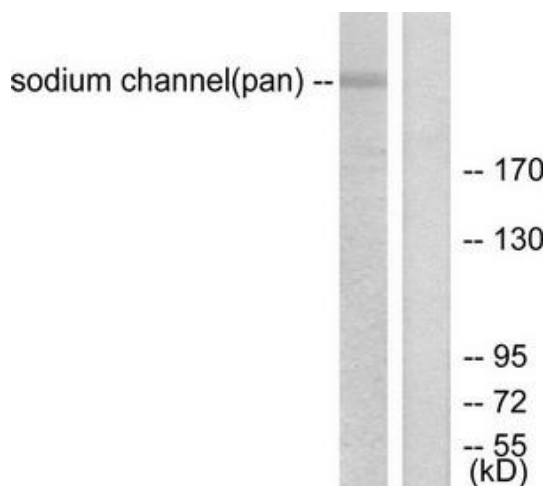
Nav1.5 (SCN5A) Rabbit Polyclonal Antibody

Product data:

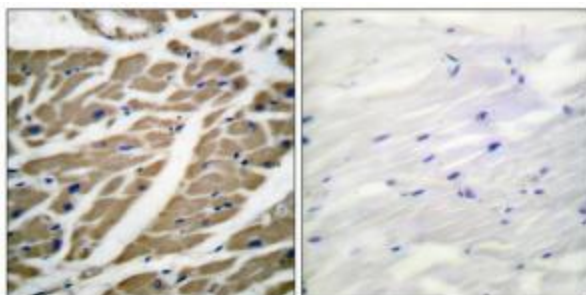
Product Type:	Primary Antibodies
Applications:	IHC, WB
Recommended Dilution:	WB: 1:500~1:3000, IHC: 1:50~1:100, ELISA: 1:20000
Reactivity:	Human, Mouse, Rat
Host:	Rabbit
Isotype:	IgG
Clonality:	Polyclonal
Immunogen:	The antiserum was produced against synthesized peptide derived from human sodium channel.
Formulation:	Phosphate buffered saline (without Mg ²⁺ and Ca ²⁺), pH 7.4, 150mM NaCl, 0.02% sodium azide and 50% glycerol.
Concentration:	lot specific
Purification:	The antibody was affinity-purified from rabbit antiserum by affinity-chromatography using epitope-specific immunogen.
Conjugation:	Unconjugated
Storage:	Store at -20°C as received.
Stability:	Stable for 12 months from date of receipt.
Gene Name:	sodium voltage-gated channel alpha subunit 5
Database Link:	NP_000326 Entrez Gene 20271 Mouse Entrez Gene 25665 Rat Entrez Gene 6331 Human Q14524
Synonyms:	CDCD2; CMD1E; CMPD2; HB1; HB2; HBBD; HH1; ICCD; IVF; LQT3; Nav1.5; PFHB1; SSS1; VF1
Note:	Sodium Channel-pan Antibody detects endogenous levels of total sodium channel protein.
Protein Families:	Druggable Genome, Ion Channels: Sodium, Transmembrane



[View online »](#)

Product images:

Western blot analysis of extracts from HuvEc cells, using Sodium Channel-pan Antibody (#TA314511).The lane on the right is treated with the synthesized peptide.



Immunohistochemical analysis of paraffin-embedded human heart tissue using Sodium Channel-pan antibody (#TA314511).The picture on the right is treated with the synthesized peptide.