

Product datasheet for **TA314501**

CLIP170 (CLIP1) Rabbit Polyclonal Antibody

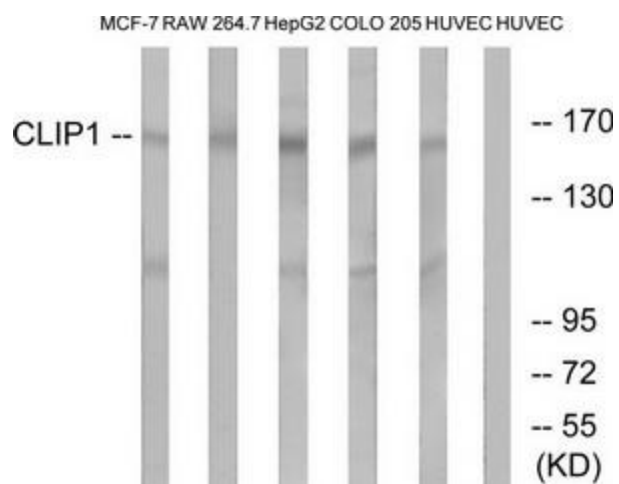
Product data:

Product Type:	Primary Antibodies
Applications:	WB
Recommended Dilution:	WB: 1:500~1:3000, ELISA: 1:20000
Reactivity:	Human, Mouse
Host:	Rabbit
Isotype:	IgG
Clonality:	Polyclonal
Immunogen:	The antiserum was produced against synthesized peptide derived from internal of human CLIP1.
Formulation:	Phosphate buffered saline (without Mg ²⁺ and Ca ²⁺), pH 7.4, 150mM NaCl, 0.02% sodium azide and 50% glycerol.
Concentration:	lot specific
Purification:	The antibody was affinity-purified from rabbit antiserum by affinity-chromatography using epitope-specific immunogen.
Conjugation:	Unconjugated
Storage:	Store at -20°C as received.
Stability:	Stable for 12 months from date of receipt.
Gene Name:	CAP-Gly domain containing linker protein 1
Database Link:	NP_937883 Entrez Gene 56430 Mouse Entrez Gene 6249 Human P30622
Synonyms:	CLIP; CLIP-170; CLIP170; CYLN1; RSN
Note:	CLIP1 antibody detects endogenous levels of total CLIP1 protein.



[View online »](#)

Product images:



Western blot analysis of extracts from MCF-7 cells, RAW264.7 cells, HepG2 cells, COLO cells and HUVEC cells, using CLIP1 antibody. The lane on the right is treated with the synthesized peptide.