

Product datasheet for **TA314500**

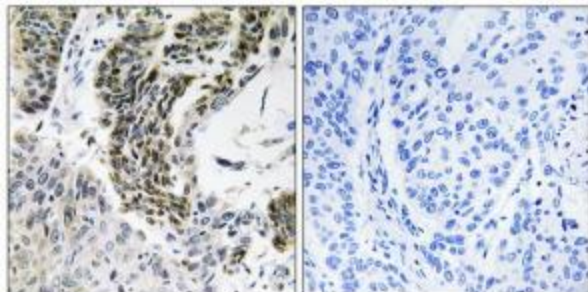
RREB1 Rabbit Polyclonal Antibody

Product data:

Product Type:	Primary Antibodies
Applications:	IHC
Recommended Dilution:	IHC: 1:50~1:100, ELISA: 1:20000
Reactivity:	Human, Mouse
Host:	Rabbit
Isotype:	IgG
Clonality:	Polyclonal
Immunogen:	The antiserum was produced against synthesized peptide derived from internal of human RREB1.
Formulation:	Phosphate buffered saline (without Mg ²⁺ and Ca ²⁺), pH 7.4, 150mM NaCl, 0.02% sodium azide and 50% glycerol.
Concentration:	lot specific
Purification:	The antibody was affinity-purified from rabbit antiserum by affinity-chromatography using epitope-specific immunogen.
Conjugation:	Unconjugated
Storage:	Store at -20°C as received.
Stability:	Stable for 12 months from date of receipt.
Gene Name:	ras responsive element binding protein 1
Database Link:	NP_002946 Entrez Gene 68750 Mouse Entrez Gene 6239 Human Q92766
Synonyms:	DNA-binding protein; FINB; finger protein in nuclear bodies; hindsight homolog; HNT; LZ321; ras responsive element binding protein 1; RREB-1; Zep-1; zinc finger motif enhancer binding protein 1
Note:	RREB1 antibody detects endogenous levels of total RREB1 protein.



[View online »](#)

Product images:

Immunohistochemistry analysis of paraffin-embedded human lung carcinoma tissue using RREB1 antibody. The picture on the right is treated with the synthesized peptide.