

## Product datasheet for **TA314499**

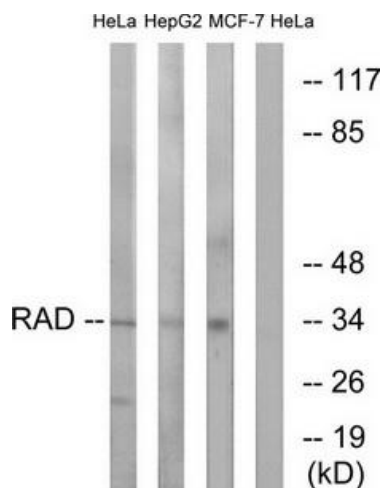
### RRAD Rabbit Polyclonal Antibody

#### Product data:

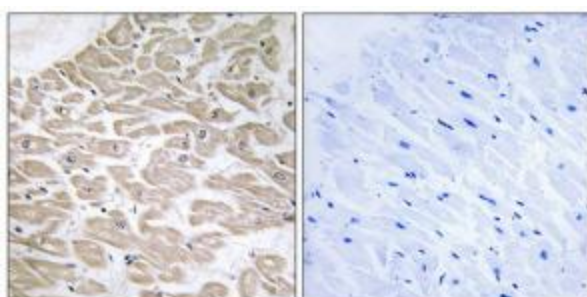
Product Type:	Primary Antibodies
Applications:	IF, IHC, WB
Recommended Dilution:	WB: 1:500~1:3000, IHC: 1:50~1:100, IF: 1:100~1:500, ELISA: 1:20000
Reactivity:	Human, Mouse, Rat
Host:	Rabbit
Isotype:	IgG
Clonality:	Polyclonal
Immunogen:	The antiserum was produced against synthesized peptide derived from internal of human RAD.
Formulation:	Phosphate buffered saline (without Mg <sup>2+</sup> and Ca <sup>2+</sup> ), pH 7.4, 150mM NaCl, 0.02% sodium azide and 50% glycerol.
Concentration:	lot specific
Purification:	The antibody was affinity-purified from rabbit antiserum by affinity-chromatography using epitope-specific immunogen.
Conjugation:	Unconjugated
Storage:	Store at -20°C as received.
Stability:	Stable for 12 months from date of receipt.
Gene Name:	RRAD, Ras related glycolysis inhibitor and calcium channel regulator
Database Link:	<a href="#">NP_001122322</a> <a href="#">Entrez Gene 56437</a> <a href="#">MouseEntrez Gene 83521</a> <a href="#">RatEntrez Gene 6236</a> <a href="#">Human P55042</a>
Synonyms:	RAD; RAD1; REM3
Note:	RAD antibody detects endogenous levels of total RAD protein.



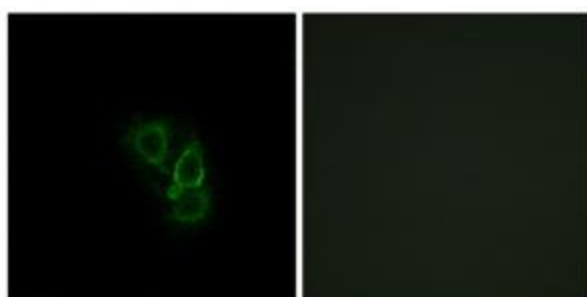
[View online »](#)

**Product images:**


Western blot analysis of extracts from HeLa cells, HepG2 cells and MCF-7 cells, using RAD antibody. The lane on the right is treated with the synthesized peptide.



Immunohistochemistry analysis of paraffin-embedded human heart tissue using RAD antibody. The picture on the right is treated with the synthesized peptide.



Immunofluorescence analysis of A549 cells, using RAD antibody. The picture on the right is treated with the synthesized peptide.