

Product datasheet for **TA314496**

RPS23 Rabbit Polyclonal Antibody

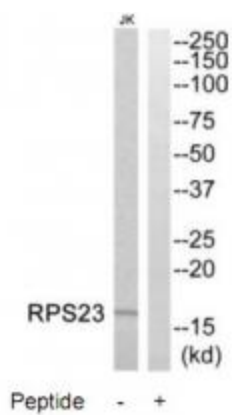
Product data:

Product Type:	Primary Antibodies
Applications:	WB
Recommended Dilution:	WB: 1:500~1:3000, ELISA: 1:10000
Reactivity:	Human, Mouse, Rat
Host:	Rabbit
Isotype:	IgG
Clonality:	Polyclonal
Immunogen:	The antiserum was produced against synthesized peptide derived from N-terminal of human RPS23.
Formulation:	Phosphate buffered saline (without Mg ²⁺ and Ca ²⁺), pH 7.4, 150mM NaCl, 0.02% sodium azide and 50% glycerol.
Concentration:	lot specific
Purification:	The antibody was affinity-purified from rabbit antiserum by affinity-chromatography using epitope-specific immunogen.
Conjugation:	Unconjugated
Storage:	Store at -20°C as received.
Stability:	Stable for 12 months from date of receipt.
Gene Name:	ribosomal protein S23
Database Link:	NP_001016 Entrez Gene 66475 MouseEntrez Gene 124323 RatEntrez Gene 6228 Human P62266
Synonyms:	S23
Note:	RPS23 antibody detects endogenous levels of total RPS23 protein.
Protein Pathways:	Ribosome



[View online »](#)

Product images:



Western blot analysis of extracts from Jurkat cells, using RPS23 antibody. The lane on the right is treated with the synthesized peptide.